



Figure 2-1
Urban Growth Trends
1950 to 2025

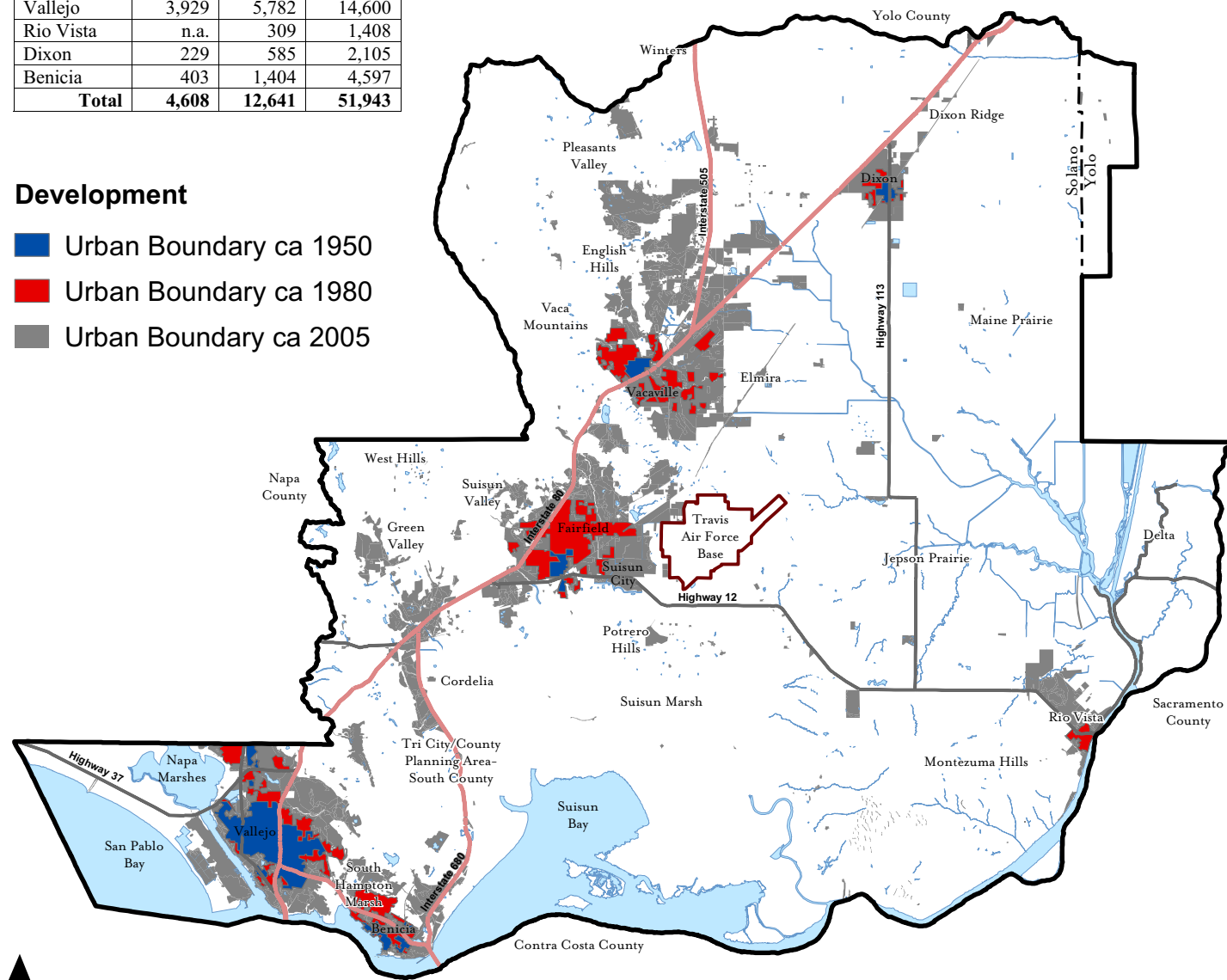
Total Area of the Major Cities in Solano County

City	Area (Acres)		
	1950	1980	2005
Fairfield	311	3,500	13,681
Vacaville	309	2,598	13,280
Suisun	60	173	2,272
Vallejo	3,929	5,782	14,600
Rio Vista	n.a.	309	1,408
Dixon	229	585	2,105
Benicia	403	1,404	4,597
Total	4,608	12,641	51,943

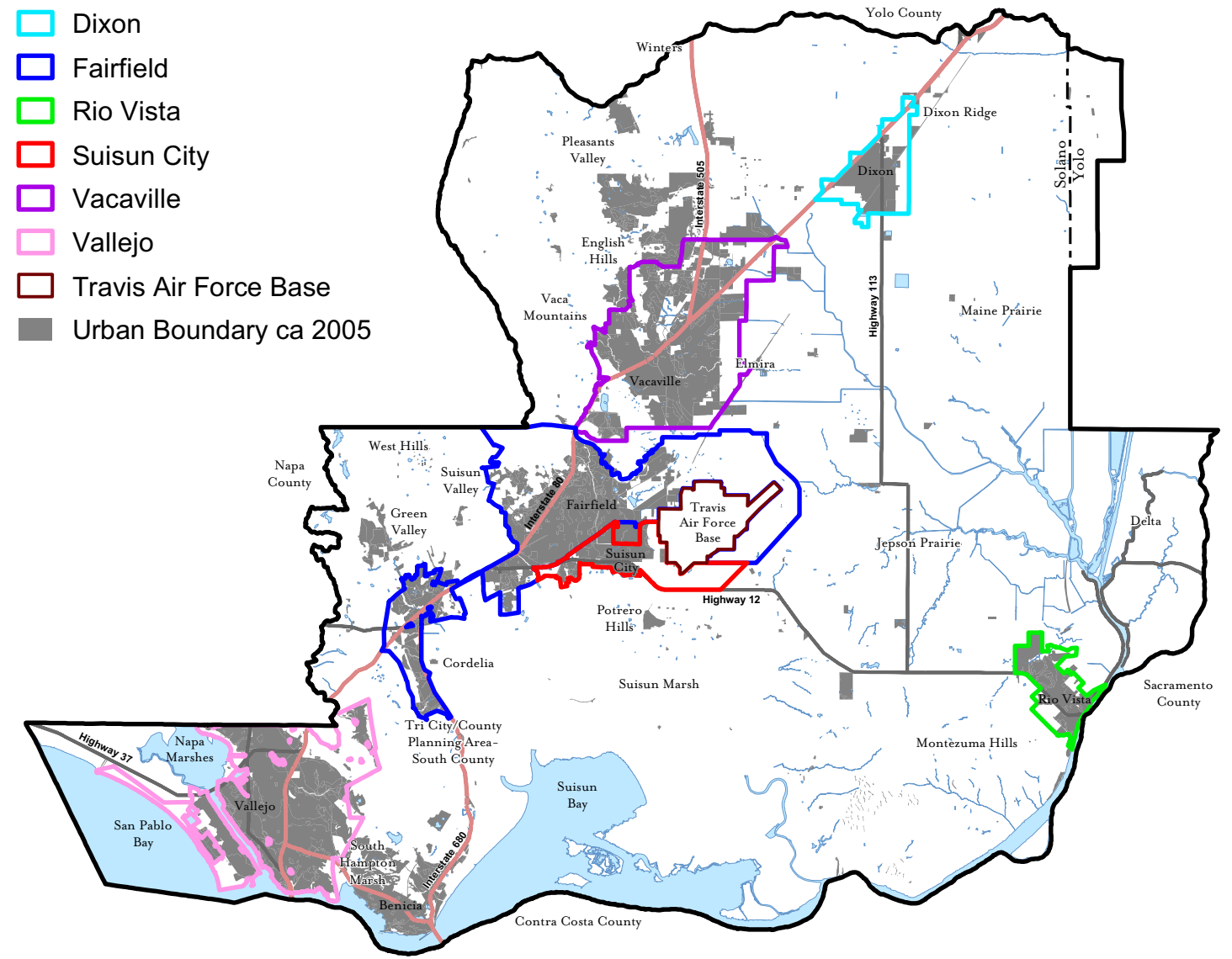
Development

- Urban Boundary ca 1950
- Urban Boundary ca 1980
- Urban Boundary ca 2005

Current Development
(ca 2005)



Future Urban Limit Line
(2020-2025)



- Dixon
- Fairfield
- Rio Vista
- Suisun City
- Vacaville
- Vallejo
- Travis Air Force Base
- Urban Boundary ca 2005

