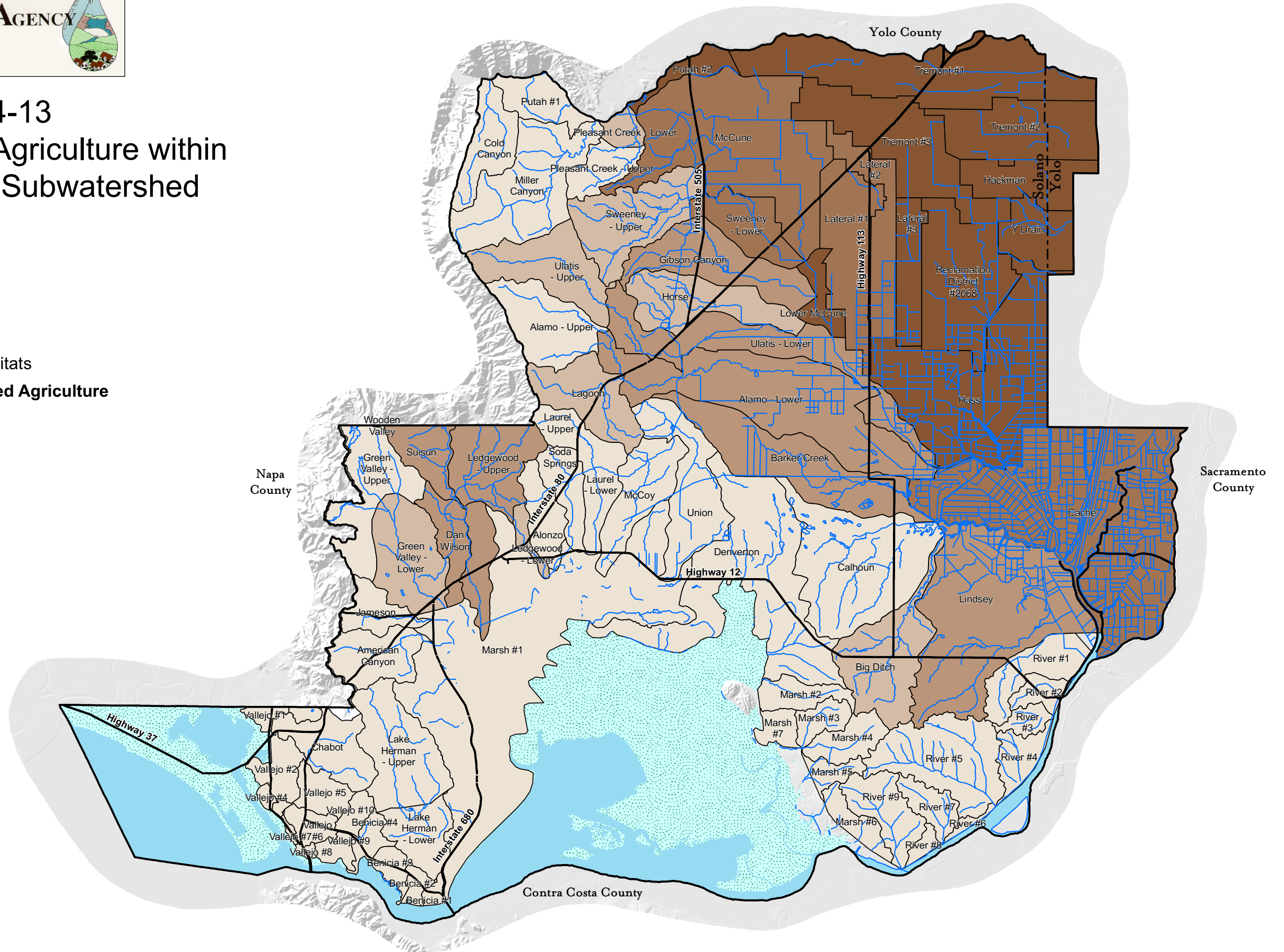




Figure 4-13  
Percent of Irrigated Agriculture within  
Each Watershed / Subwatershed

- ~ Major Roads
  - ~ Waterways
  - Marsh
  - Open Water Habitats
- Percent of Watershed Agriculture**
- 0 - 8%
  - 9 - 27%
  - 28 - 56%
  - 57 - 83%
  - 84 - 100%



0 2 4 Miles