








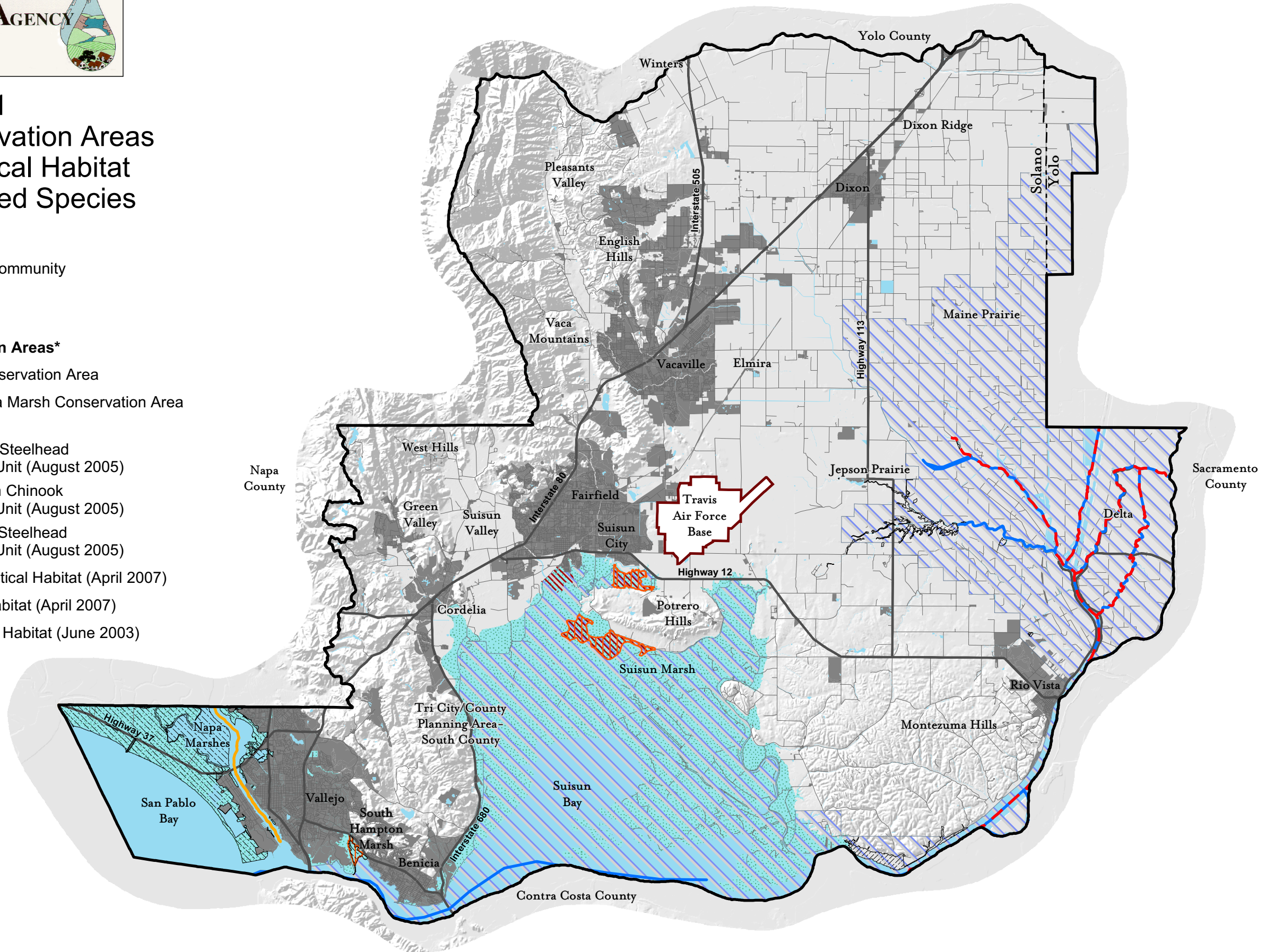


**Figure 4-21**  
**Coastal Marsh Conservation Areas**  
**and Designated Critical Habitat**  
**for Associated Covered Species**

- ~ Major Roads
-  Coastal Marsh Natural Community
-  Travis Air Force Base
-  Developed
- Coastal Marsh Conservation Areas\***
-  Delta Region Marsh Conservation Area
-  San Pablo Bay and Napa Marsh Conservation Area
- Critical Habitat**
-  California Central Valley Steelhead Evolutionary Significant Unit (August 2005)
-  Central Valley Spring-run Chinook Evolutionary Significant Unit (August 2005)
-  Central California Coast Steelhead Evolutionary Significant Unit (August 2005)
-  Soft Bird's Beak Final Critical Habitat (April 2007)
-  Suisun Thistle Critical Habitat (April 2007)
-  Delta Smelt Final Critical Habitat (June 2003)



\* See Figure 4-20 for Suisun Marsh Conservation Area