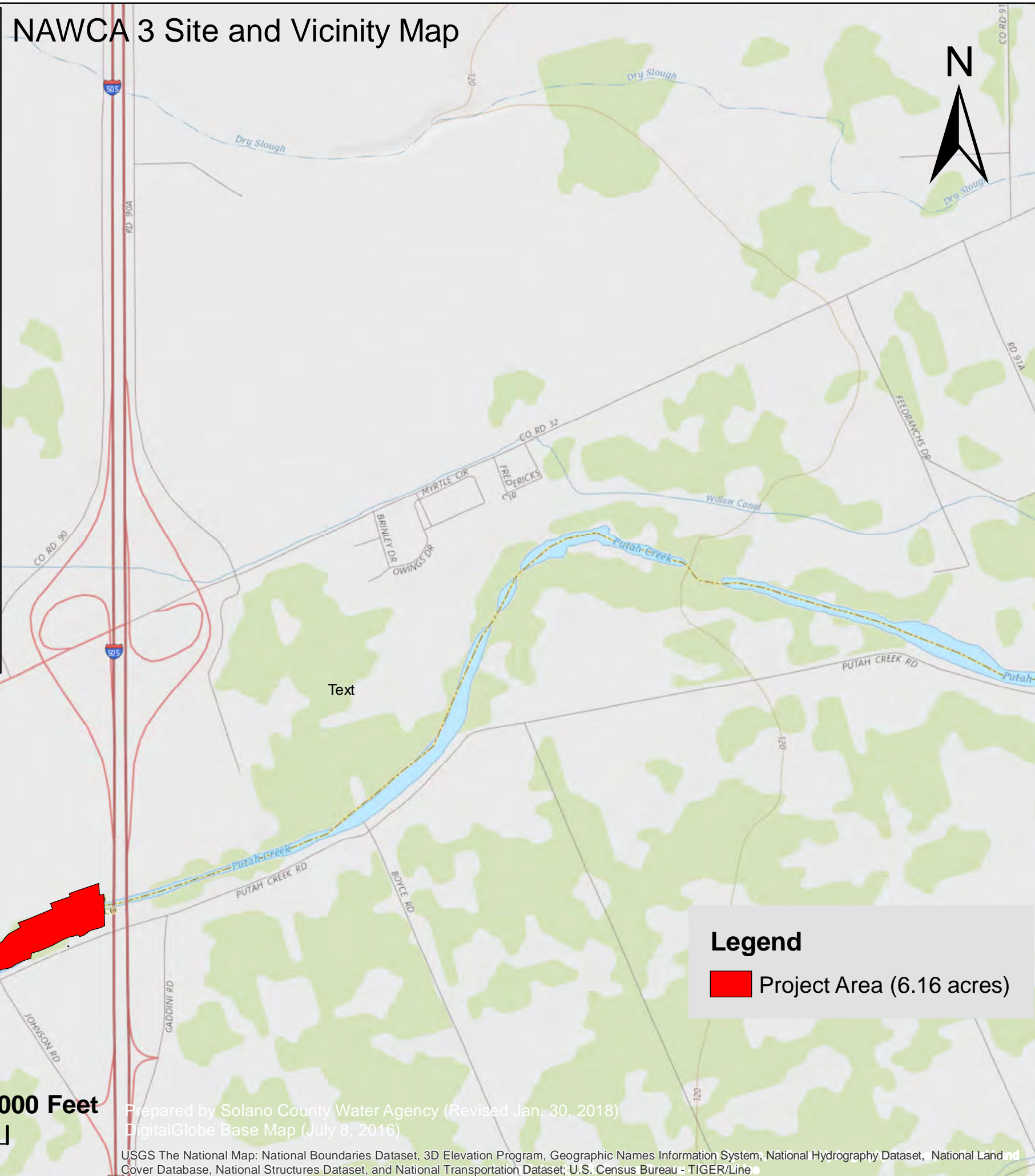
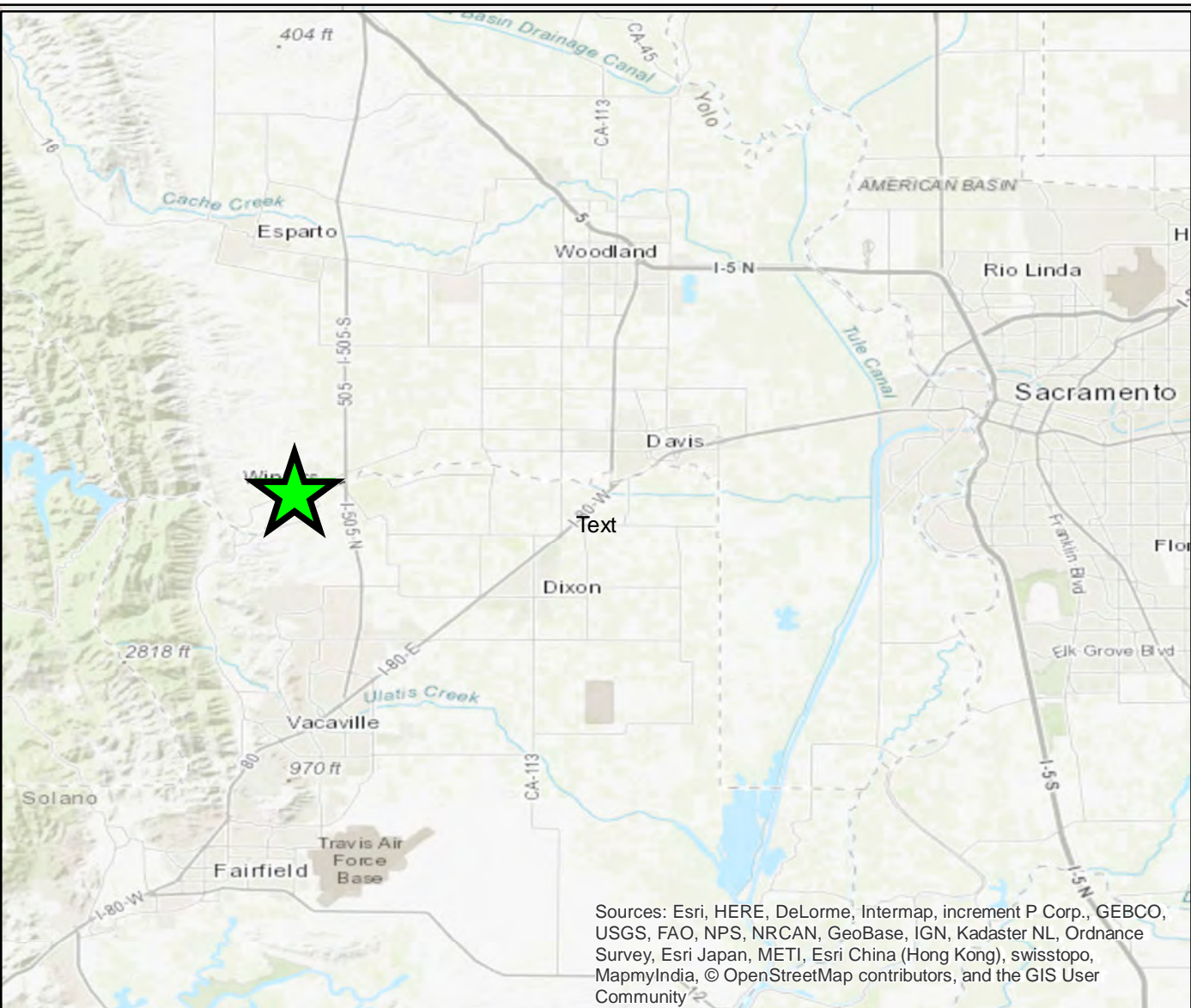


NAWCA 3 Site and Vicinity Map



NAWCA 3 Project Map



City of Winters

I-505

Putah Creek Road

-121.953232, 38.525569

-121.956830, 38.524073

Legend

- Control Points
- Existing WOTUS (3.04 acres)
- Project Area (6.16 acres)
- Existing Channel (Flows West to East)
- Tree Removal within OHWM (12 native and 11 non-native four inch or greater DBH)
- Open Water Narrowing Fill (0.21 acre, 580 LF)
- Floodplain Grading Area 1 (GA1) (Perm. Imp. 0.21 acre, 1,050 LF)
- Floodplain Grading Area 2 (GA2) (Perm. Imp. 1.56 acre, 1,070 LF)
- Proposed Design Channel (0.19 Acre)
- Staging Areas



Prepared by Solano County Water Agency (Revised Jan. 30, 2018)
DigitalGlobe Base Map (July 8, 2016)

Source: Esri, DigitalGlobe, GeoEye, Earthstar Geographics, CNES/Airbus DS, USDA, USGS, AEX, Getmapping, Aerogrid, IGN, IGP, swisstopo, and the GIS User Community