

Solano Habitat Conservation Plan

Figure A-12
Dixon Regional Watershed Joint Powers Authority (JPA) Facilities

Legend

- Plan Area
- Interstate Highways
- State Routes
- Major Roads
- Streets

CWA Jurisdictional Features

Culvert or Bridge Crossings	23
Irrigation Ditch - Drainage	15,500 ft.
Irrigation Ditch - Combined Supply and Drainage	33,800 ft.

Proposed Facilities

Irrigation Ditch - Combined Supply and Drainage*	52,900 ft.
Proposed New and Enhanced Facility Locations	694.9 ac.
Proposed City of Dixon Pond** (Stormwater Detention Basin)	80.2 ac.

Non-jurisdictional Features

None on map

* Currently a Dixon Resource Conservation District facility

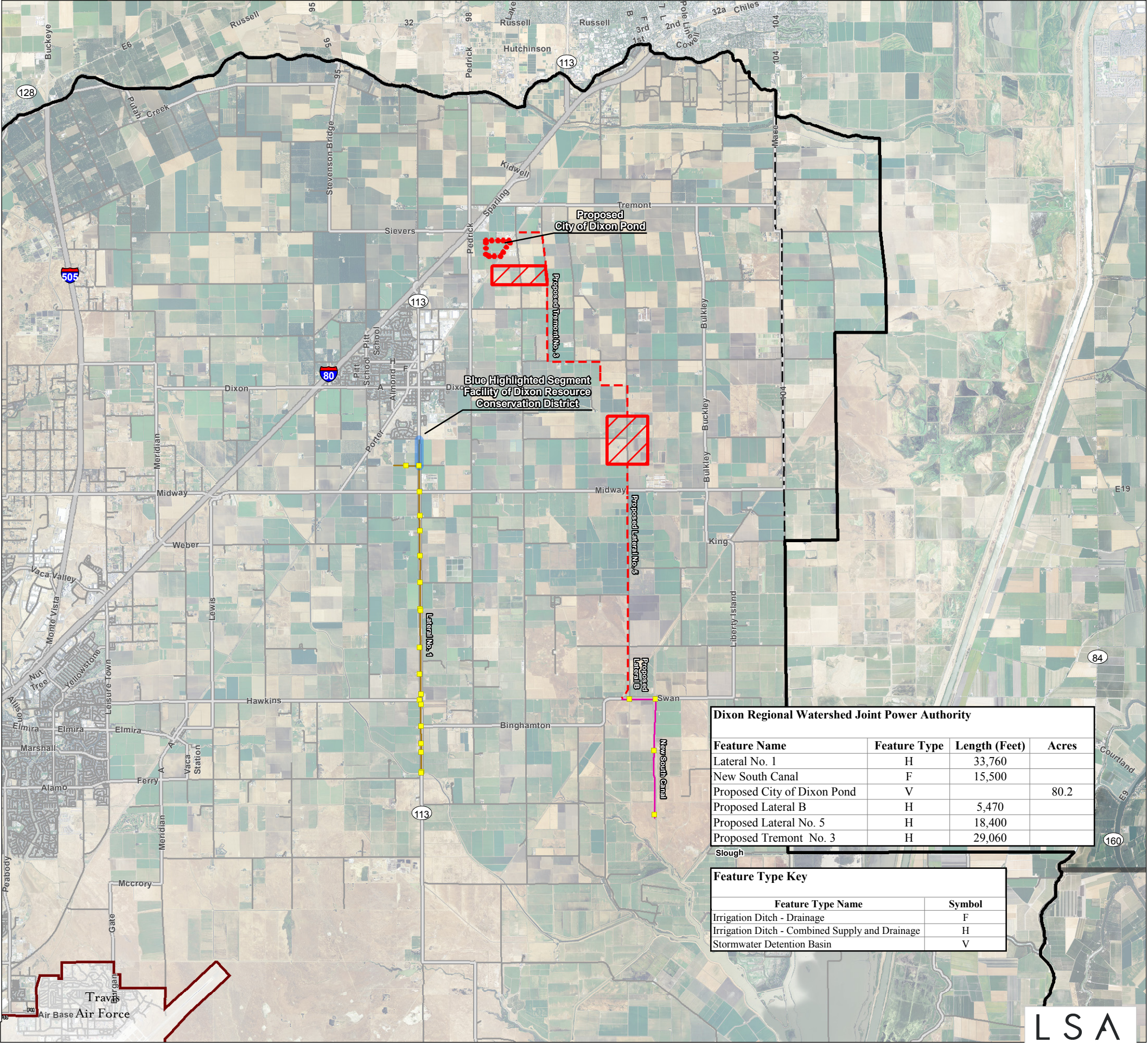
** Proposed future pond will be a facility of the City of Dixon

Extent of Figure

Note: The Dixon Regional Watershed JPA includes Dixon Resource Conservation District, the City of Dixon, Maine Prairie Water District, and Reclamation District 2068. Irrigation ditches and detention basin are mapped as reported by the Dixon Regional Watershed JPA.

0 1 2 Miles

SOURCE: Aerial Imagery from the USDA; NAIP (2009) and the Dixon Watershed Management Plan by West Yost (2001)



Dixon Regional Watershed Joint Power Authority			
Feature Name	Feature Type	Length (Feet)	Acres
Lateral No. 1	H	33,760	
New South Canal	F	15,500	
Proposed City of Dixon Pond	V		80.2
Proposed Lateral B	H	5,470	
Proposed Lateral No. 5	H	18,400	
Proposed Tremont No. 3	H	29,060	
Slough			

Feature Type Key	
Feature Type Name	Symbol
Irrigation Ditch - Drainage	F
Irrigation Ditch - Combined Supply and Drainage	H
Stormwater Detention Basin	V