

Solano Habitat Conservation Plan

Figure A-7
City of Dixon Facilities

Legend

- Dixon Urban Growth Boundary
- Interstate Highways
- State Routes
- Major Roads
- Streets

CWA Jurisdictional Features

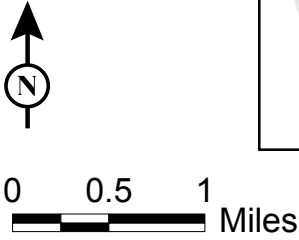
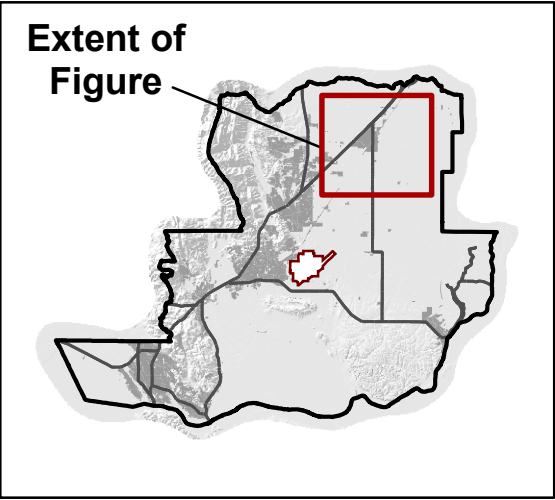
	Total on Map
Pipe Outfall to Jurisdictional Water	3
Stormwater Detention Basin	182.4 ac.

Non-Jurisdictional Features

Sewer Treatment Plant/Pond	422.4 ac.
----------------------------	-----------

Proposed Facilities

Proposed City of Dixon Pond (Stormwater Detention Basin)	80.2 ac.
--	----------



Note: Pipe outfalls, detention basins and sewer treatment plant ponds are mapped as reported by the City of Dixon. Culverts and bridge crossings mapped by LSA.

