







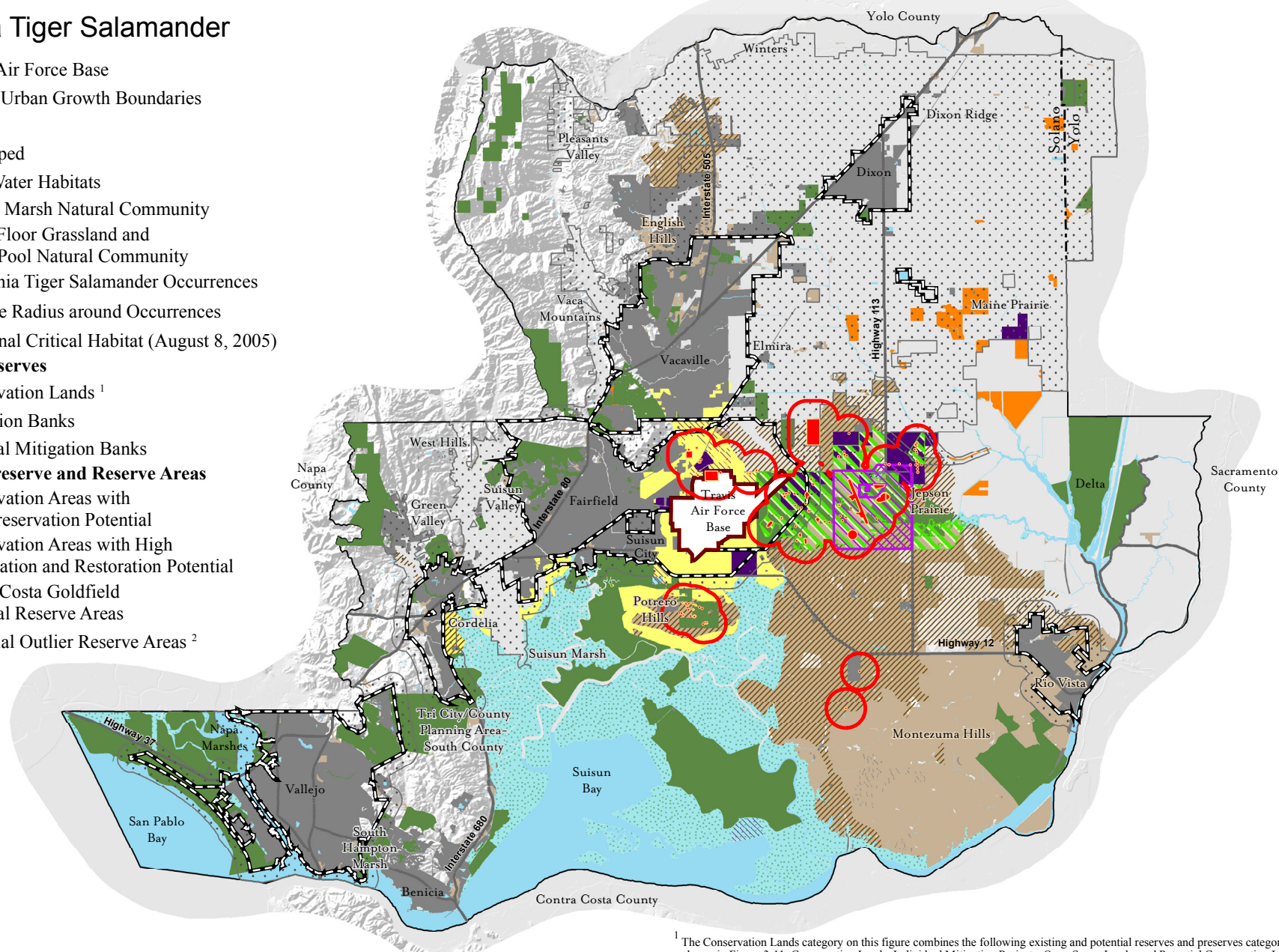


Solano Habitat Conservation Plan

California Tiger Salamander

-  Travis Air Force Base
-  Zone 1 Urban Growth Boundaries
-  Zone 2
-  Developed
-  Open Water Habitats
-  Coastal Marsh Natural Community
-  Valley Floor Grassland and Vernal Pool Natural Community
-  California Tiger Salamander Occurrences
-  0.7 Mile Radius around Occurrences
-  CTS Final Critical Habitat (August 8, 2005)
- Existing Reserves**
 -  Conservation Lands ¹
 -  Mitigation Banks
 -  Potential Mitigation Banks
- Potential Preserve and Reserve Areas**
 -  Conservation Areas with High Preservation Potential
 -  Conservation Areas with High Preservation and Restoration Potential
 -  Contra Costa Goldfield Potential Reserve Areas
 -  Potential Outlier Reserve Areas ²



NOTE: California tiger salamanders occurrences were buffered by 0.7 miles to correspond with Objective VPG 2.16, which defines a breeding population as including a minimum of 2 or more breeding sites located within 0.7 mile of each other and connected by continuous associated upland habitat.

¹ The Conservation Lands category on this figure combines the following existing and potential reserves and preserves categories shown in Figure 3-11: Conservation Lands, Individual Mitigation Projects, Open Space Lands, and Potential Conservation Lands.

² Outlier areas will be considered as potential reserve areas if they contain unique habitat features, rare or range limited species or genetically distinct population segments of covered species.