




## Solano Habitat Conservation Plan





## Solano Grass

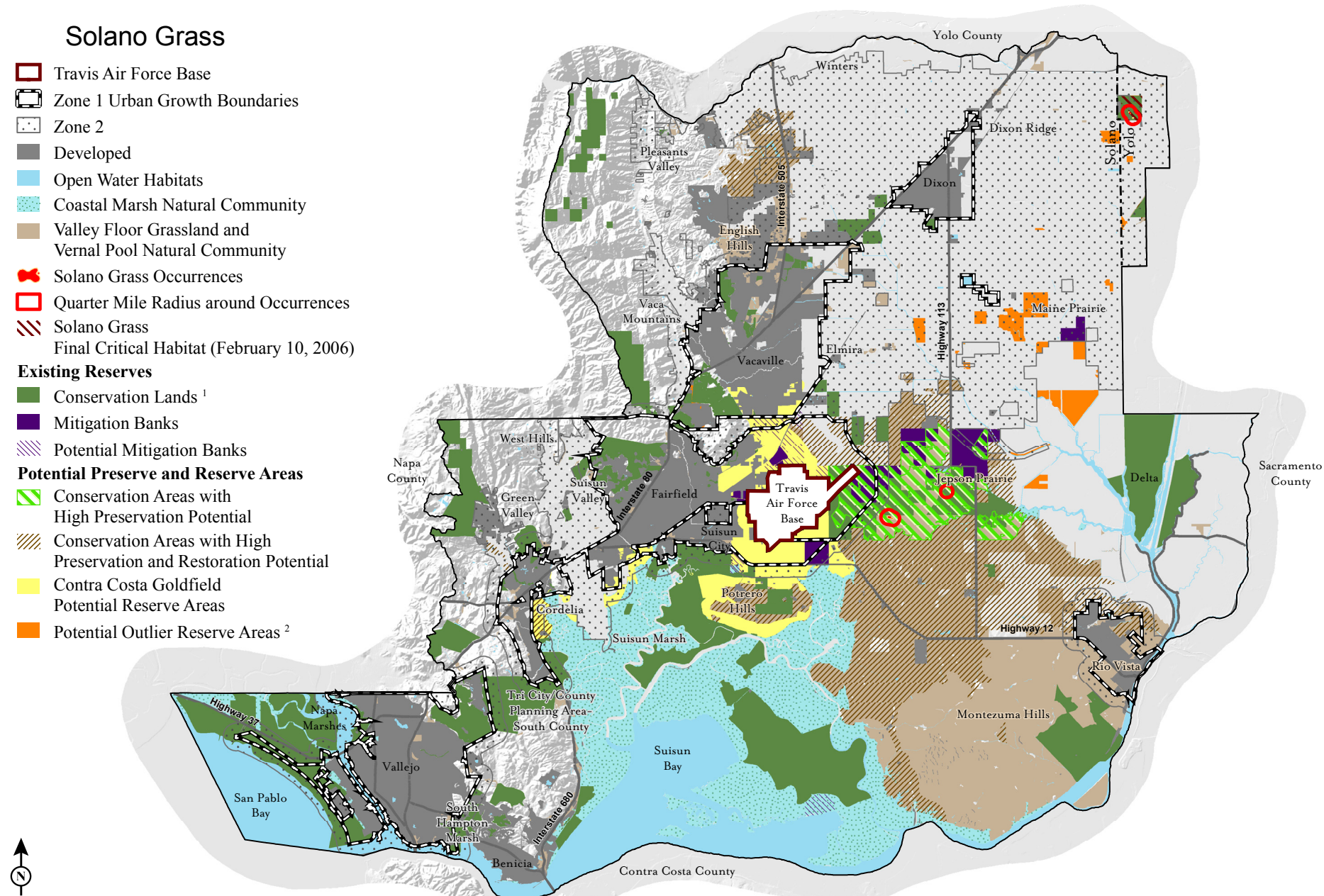
-  Travis Air Force Base
-  Zone 1 Urban Growth Boundaries
-  Zone 2
-  Developed
-  Open Water Habitats
-  Coastal Marsh Natural Community
-  Valley Floor Grassland and Vernal Pool Natural Community
-  Solano Grass Occurrences
-  Quarter Mile Radius around Occurrences
-  Solano Grass Final Critical Habitat (February 10, 2006)

## Existing Reserves

-  Conservation Lands <sup>1</sup>
-  Mitigation Banks
-  Potential Mitigation Banks

## Potential Preserve and Reserve Areas

-  Conservation Areas with High Preservation Potential
-  Conservation Areas with High Preservation and Restoration Potential
-  Contra Costa Goldfield Potential Reserve Areas
-  Potential Outlier Reserve Areas <sup>2</sup>



NOTE: One occurrence for vernal pool plants and crustaceans corresponds to an occupied area at least 0.4 kilometers (¼ mile) away from the next occupied area or separated by major barriers (roads, development etc.), corresponding to the definition of occurrence for these species in the Vernal Pool Recovery Plan (USFWS 2005).

<sup>1</sup> The Conservation Lands category on this figure combines the following existing and potential reserves and preserves categories shown in Figure 3-11: Conservation Lands, Individual Mitigation Projects, Open Space Lands, and Potential Conservation Lands.

<sup>2</sup> Outlier areas will be considered as potential reserve areas if they contain unique habitat features, rare or range limited species or genetically distinct population segments of covered species.