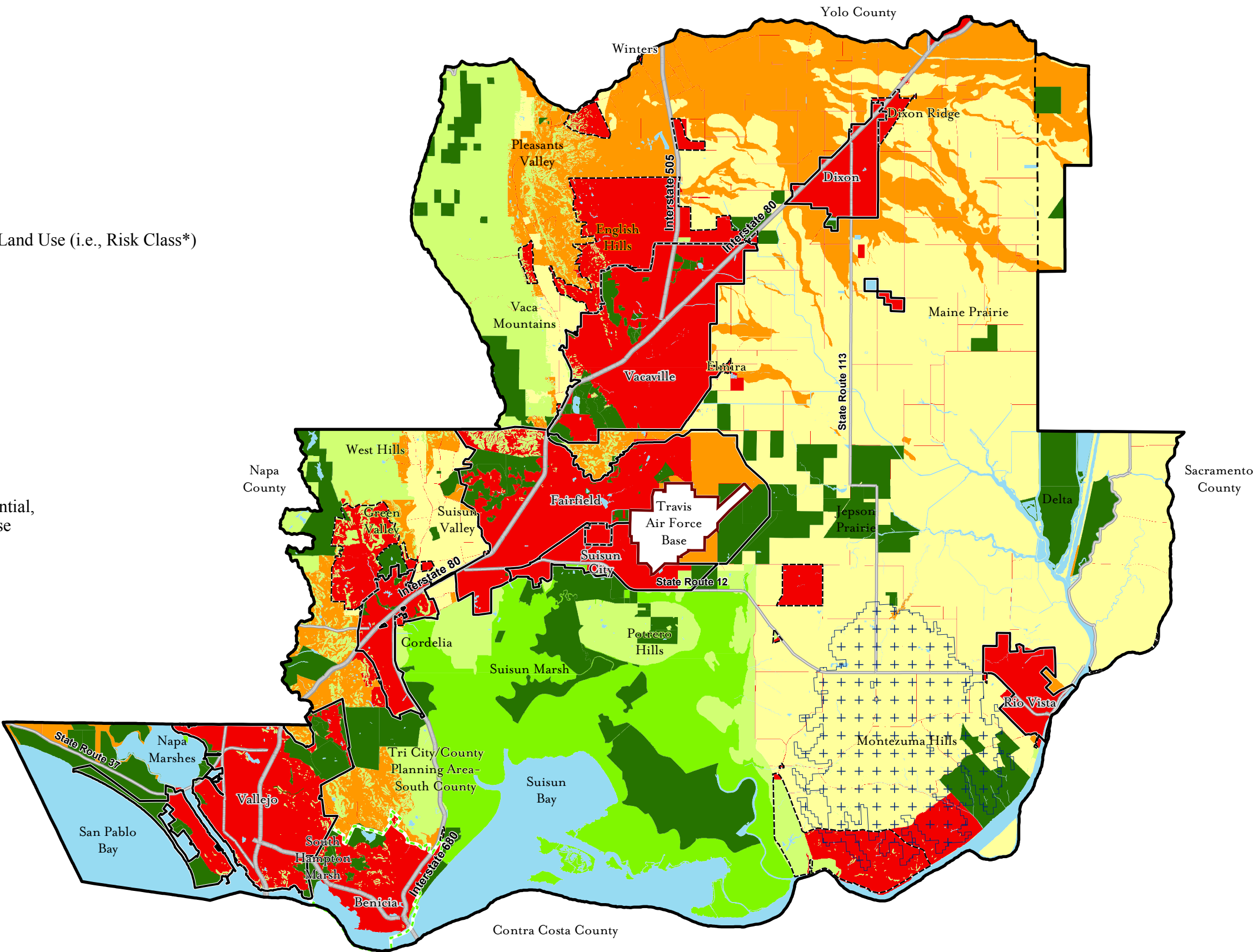


Figure 3-12
Risk Analysis

- Interstate Highways
- State Routes
- Risk of Conversion to an Incompatible Land Use (i.e., Risk Class*)
 - Very High
 - High
 - Moderate
 - Low
 - Very Low
 - Preserve/Reserve
- Wind Energy Resource Area - Solano County General Plan
- Urban Growth Boundaries (Zone 1)
- Solano County General Plan Residential, Commercial, and Industrial Land Use Designations - Not part of the HCP
- Benicia Municipal Services Area - Not part of the HCP
- Open Water



* See Section 3.6 for more description of the Risk Analysis and definitions of Risk Classes.