






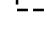

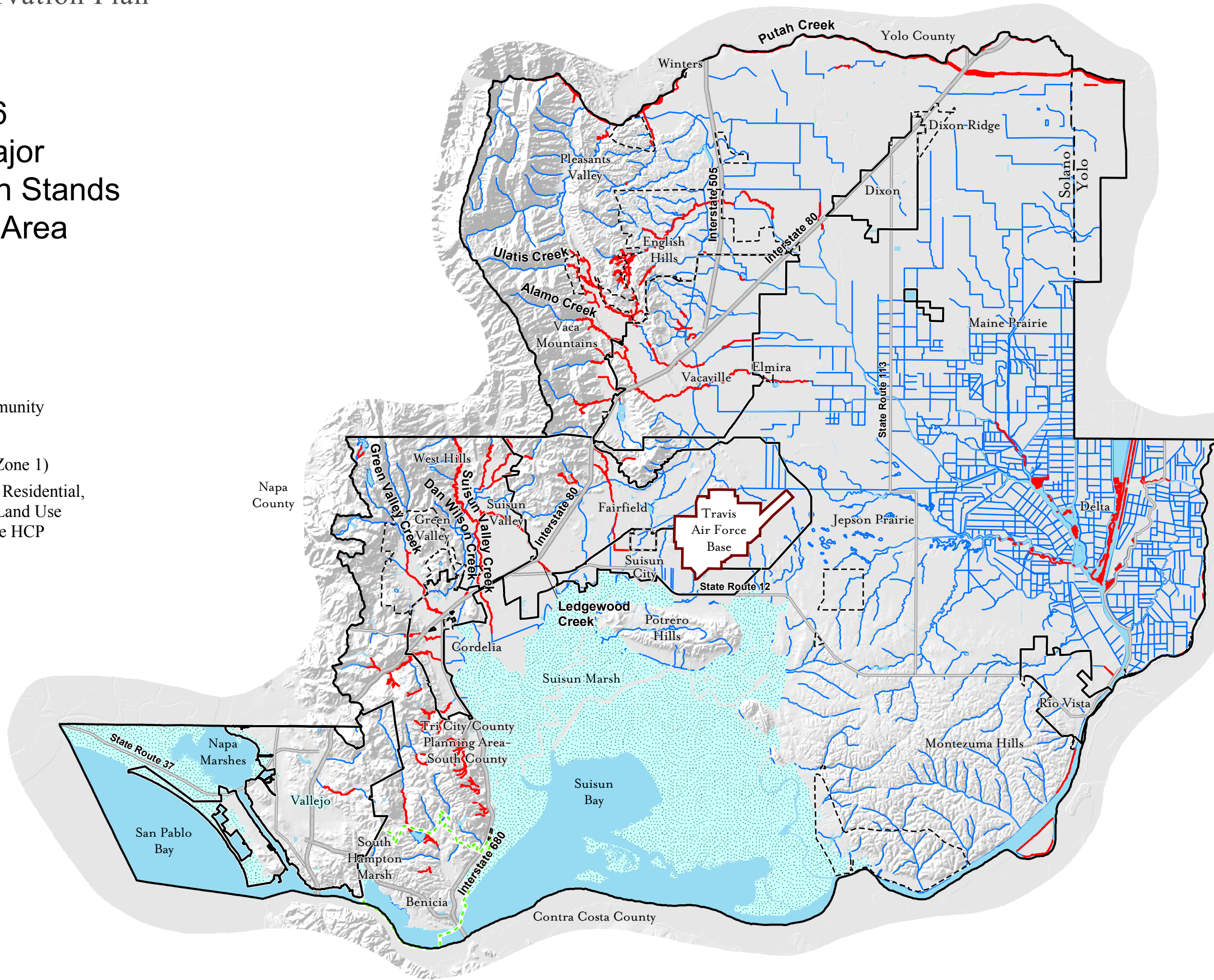


Solano Habitat Conservation Plan

Figure 4-16
Location of Major
Riparian Vegetation Stands
within the Plan Area

-  Interstate Highways
-  State Routes
-  Waterways
-  Riparian Vegetation
-  Coastal Marsh Natural Community
-  Open Water
-  Urban Growth Boundaries (Zone 1)
-  Solano County General Plan Residential, Commercial, and Industrial Land Use Designations - Not part of the HCP
-  Benicia Municipal Services Area - Not part of the HCP



0 2 4
Miles