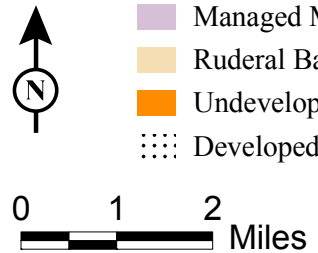
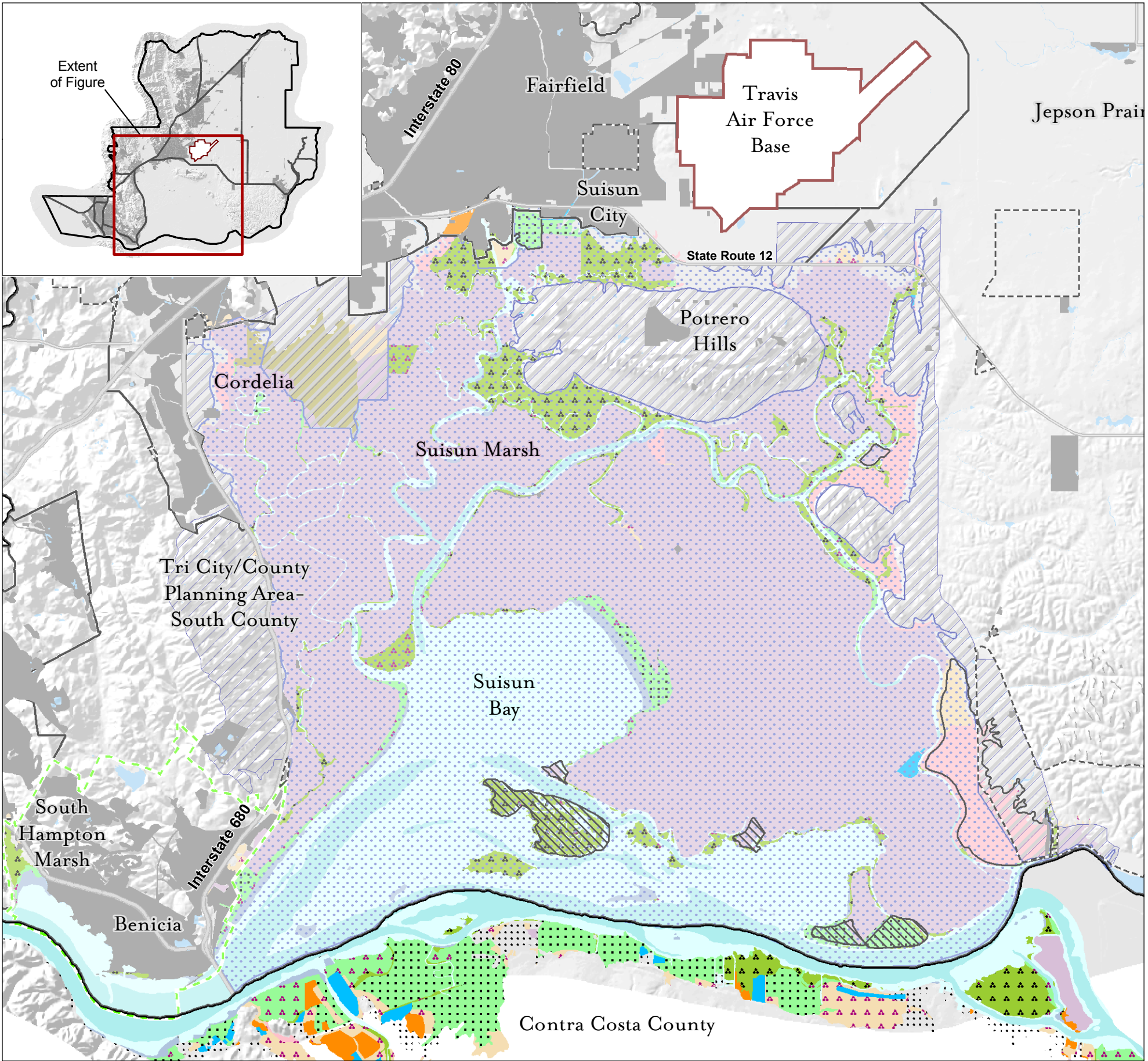


Solano Habitat Conservation Plan

Figure 4-19  
Suisun Marsh Protection  
Plan Map and Suisun Tidal  
Wetland Restoration Projects

- Interstate Highways
- State Routes
- Urban Growth Boundaries (Zone 1)
- Solano County General Plan Residential, Commercial, and Industrial Land Use Designations - Not part of the HCP
- Benicia Municipal Services Area - Not part of the HCP
- Developed
- Open Water
- Suisun Marsh Conservation Area\***
- Primary Management Area
- Secondary Management Area
- Tidal Wetland Restoration Projects (February 2004)**
- Completed
- Planned
- SFEI Modern Baylands (1997)**
- Deep Bay or Major Channel
- Shallow Bay or Major Channel
- Bay or Channel Flat
- Old High-Elevation Tidal Marsh
- Young High-Elevation Tidal Marsh
- Young Low/Mid-Elevation Tidal Marsh
- Muted Tidal Marsh
- Diked Marsh
- Farmed Bayland
- Grazed Bayland
- Storage or Treatment Basin
- Managed Marsh
- Ruderal Bayland
- Undeveloped Fill
- Developed Island or Fill



\*Suisun Marsh Protection Plan (April 1995)