



Wildlife Survey & Photo Service

2443 Fair Oaks Blvd. # 209 • Sacramento, CA 95825 • (916) 747-8537

REPORT 5890 Scarification Images

May 4, 2018

To: Rich Marovich,
Putah Creek Streamkeeper

From Ken W. Davis
Aquatic Biologist / Wildlife Photojournalist

Subject: 2017 Scarification Sites- Comparative Images for Project Site 2 (Morales 1 of 3)

REPORT

I've embedded "comparative" aerial images for the 2017 Scarification Site Number 2 in this report. Separate images are available, but they are probably more effective when compared on the same page.

IMPORTANT: The following points are germane:

1. Site images are for the 2017 Scarification Project Site 2 (Morales 1 of 3 sites)
2. The images were taken at different times of the year. 11-18-2016 and 5-1-2018
3. The images taken on 5-1-2018 show sand that was washed downstream during the floods of early 2017.
4. Mc Cune Creek can be seen on the right of the aerial images.
5. Observed redds (Ken W. Davis) are marked with yellow circles on the 5-1-2018 image.
6. In my (Ken W. Davis) experience on Lower Putah Creek (since 2003) salmon have never spawned at the site prior to the Scarification Project.
7. The "on-ground" image shows trees planted and caged to protect from beaver damage. The caged trees can be seen in the 5-1-2018 drone image.

Submitted via e-mail on May 4, 2018

Ken W. Davis
Aquatic Biologist / Wildlife Photojournalist
Wildlife Survey & Photo Service
2443 Fair Oaks Blvd. # 209
Sacramento, CA 95825
ken@creekman.com
www.creekman.com



Aerial image of Pre-Scarification site taken on 11-18-2016. Site was not usable by spawning salmon prior to 2017 scarification due to a cemented benthic condition and slow water.



5-1-2018 Aerial image of 2017 Scarification Site # 2. Post Scarification. See on-ground image on Page 3

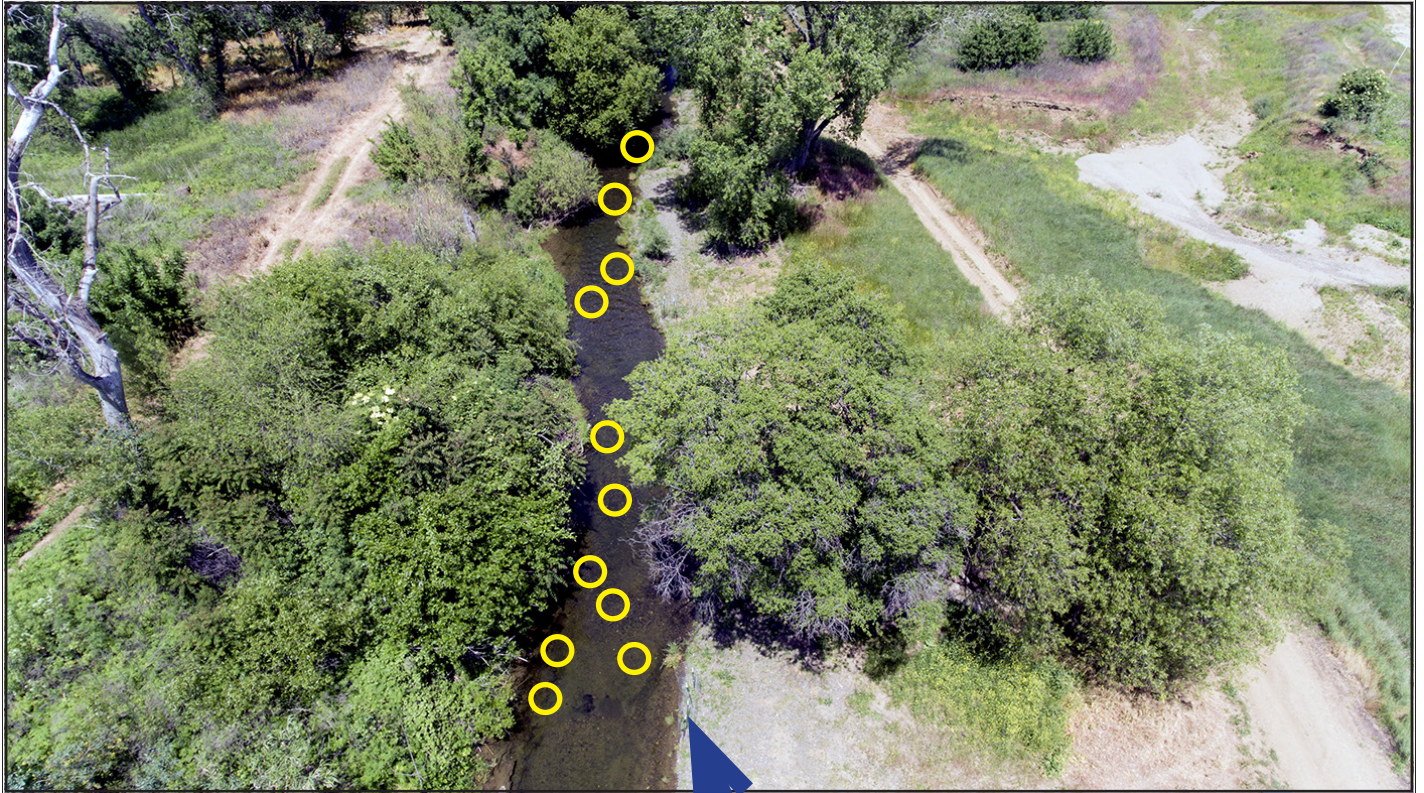


Wildlife Survey & Photo Service

2443 Fair Oaks Blvd. # 209 • Sacramento, CA 95825 • (916) 747-8537

REPORT 5890 Scarification Images

Same image (KDavis-5890-5-1-2018_DJI0024) as on page 2 taken on 5-1-2018. Shown to help understand the proximity to the on-ground image below. Yellow circles show the sites of observed salmon redds.



5-1-2018 image of Scarification Site # 2. Post Scarification. Salmon redds can be seen in this image. Arrow shows site of caged trees on aerial image.