



March 6, 2012

To: Rich Marovich, LPCCC  
Chris Lee, SCWA

From: Ken W. Davis  
Aquatic biologist

Regarding: Colonization in River Parkway Section

**Report**

I expect several species of aquatic invertebrates to quickly colonize the constructed riffles in the River Parkway section of Putah Creek. The first species are typically blackflies, of the family Simuliidae (Diptera).

Blackflies continue to colonize the new riffles in the River Parkway Project area. The density of the 4 - 15mm long larvae has exceeded upstream sections such as Fishing Access # 3 and at the Pickerel weir. The larvae are so numerous and difficult to collect due to sticky silk threads used to anchor in fast-moving water that I am considering them "too numerous to count." At this point, I will be using underwater images to estimate the number of blackflies on measured cobble.

Trout studies in Oregon claim that blackflies are the most important trout food during certain times of the year. They are also easy prey for any small fish



River Parkway Riffle - March 5, 2012



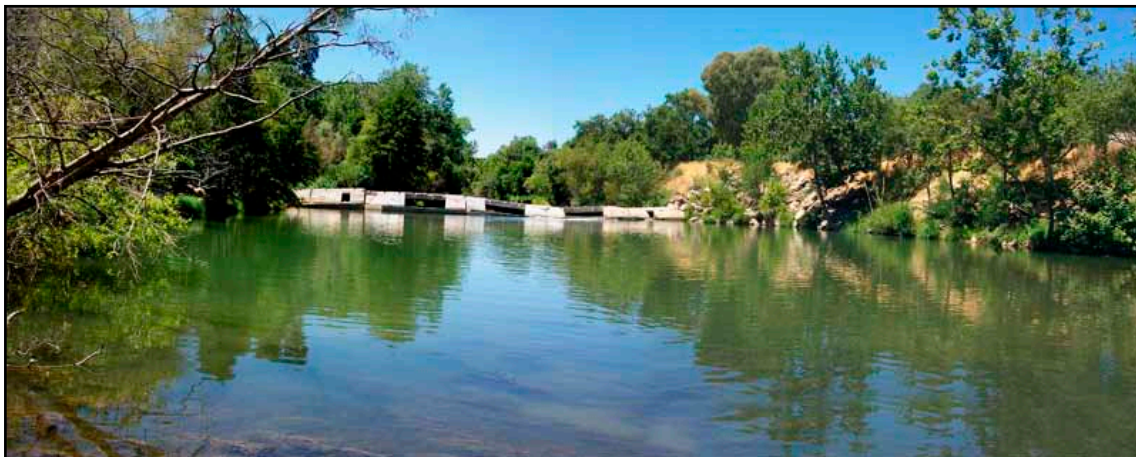
Blackfly larvae attached to cobble.



Image left: Blackfly larvae on cobble. Underwater image taken in River Parkway stretch on March 6, 2012. The larvae are evenly distributed over the entire rock. Some areas are covered with pupae. Density is estimated at 200 to 800 blackfly larvae per cobble.



I recently located images taken of the River Parkway Section prior (4/24/2000) to the removal of Percolation Dam and soon after. I will continue obtaining sequential images of this site as well as the series from the Winters Bike Bridge.



4/24/2000: Perc Dam from downstream.



8/12/2011



11/25/2011