

SOLANO COUNTY WATER AGENCY WEEKLY REPORT

For Week Ending Sunday, October 04, 2020

Last Updated: Tuesday, October 06, 2020

SOLANO PROJECT

Lake Berryessa Surface Elevation	420.24 ft (top of Glory Hole is 439.96 ft)
Surface Elevation Changes from 10/1/2020	-0.12 ft
Lake Berryessa Storage (acre-feet)	1,197,774 AF (Max 1.55 Million AF)
Storage Changes from 10/1/2020	-2,227 AF
Lake Berryessa % Capacity	77.21%
Distance to Glory Hole	19.72 feet BELOW
Decrease from High Point	227,706 AF (Lake high of 1,425,480 on 02/01/2020)
Putah Creek Releases	24.85 cfs
Putah Creek Flood Releases	0.00 cfs

Lower Putah Creek minimum discharge requirements for the month of October:

20 cfs at the Diversion Dam.

5 cfs at Interstate 80.

NORTH BAY AQUEDUCT

Current Allocations of Contract Amount

SWP North of Delta Allocation = 30% (as of 5/22/20)

Flows for the week of 9/27/2020 to 10/4/2020 (units are in CFS)

Monday	90
Tuesday	63
Wednesday	69
Thursday	75
Friday	101
Saturday	98
Sunday	95

RAINFALL			
Lake Solano		Lake Berryessa	
Annual Rainfall Average	Year to Date Rainfall Total	Annual Rainfall Average	Year to Date Rainfall Total
23.76	0.00	25.40	0.00

GENERAL MANAGER'S NOTES

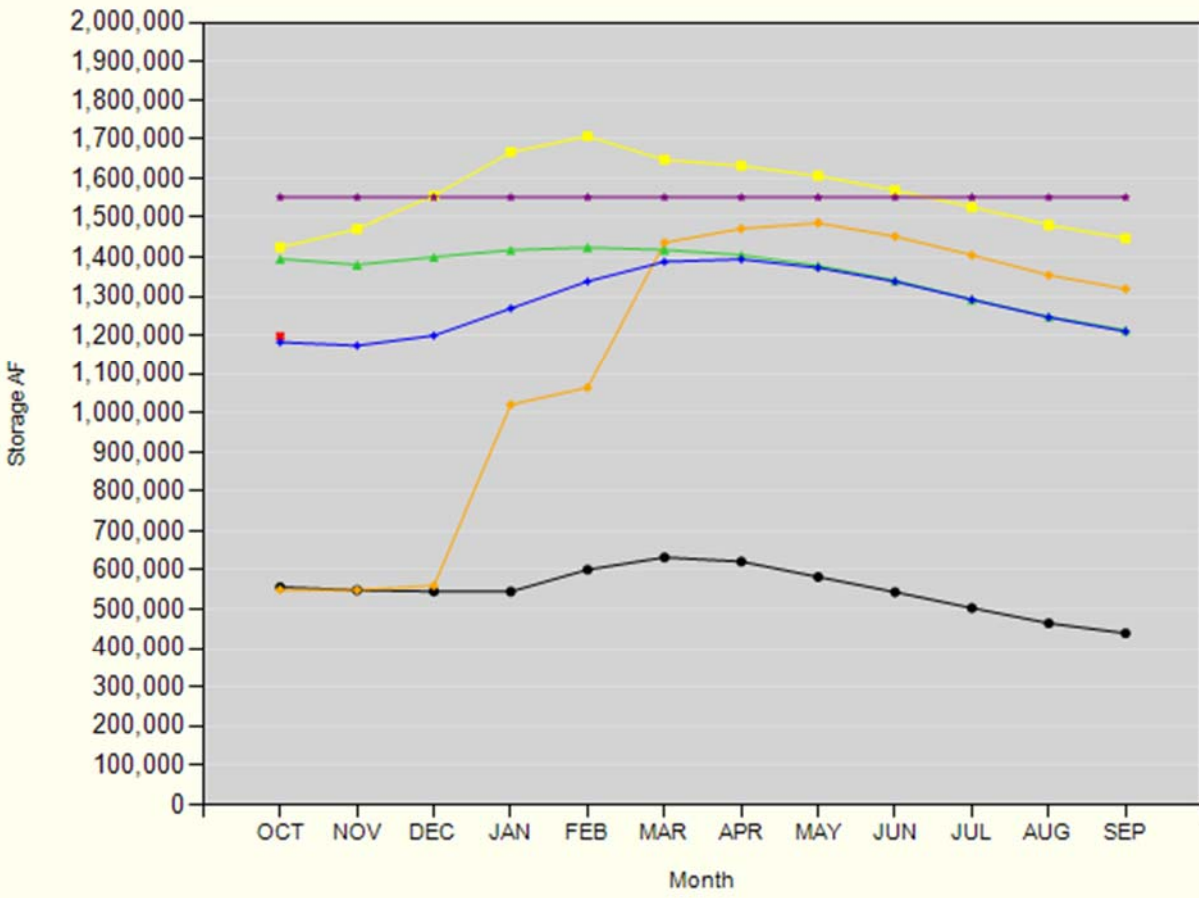
Advisory Commission meeting will be **October 28, via Zoom.**

The next SCWA Board Meeting will take place on **October 8, via Zoom.**

The next Flood Control Advisory Committee Meeting will be on **CANCELLED UNTIL FURTHER NOTICE at SCWA Office.**

Lake Berryessa Storage

1983 - Highest Storage 1995 - Greatest Gain 2021 SPILL LEVEL
1992 - Lowest Storage 2020 Average (1960 - Current)



Lake Berryessa Water Temperature

