

SOLANO COUNTY WATER AGENCY
WEEKLY REPORT
For Week Ending Sunday, December 06, 2020

Last Updated: Tuesday, December 08, 2020

SOLANO PROJECT

Lake Berryessa Surface Elevation	418.08 ft (top of Glory Hole is 439.96 ft)
Surface Elevation Changes from 12/1/2020	-0.07 ft
Lake Berryessa Storage (acre-feet)	1,161,101 AF (Max 1.55 Million AF)
Storage Changes from 12/1/2020	-1,436 AF
Lake Berryessa % Capacity	74.85%
Distance to Glory Hole	21.88 feet BELOW
Increase from Low Point	264,379 AF (Lake High of 1,425,480 on 02/01/2020)
Putah Creek Releases	42.00 cfs
Putah Creek Flood Releases	0.00 cfs

Lower Putah Creek minimum discharge requirements for the month of December:

25 cfs at the Diversion Dam.

10 cfs at Interstate 80.

NORTH BAY AQUEDUCT

Current Allocations of Contract Amount

SWP North of Delta Allocation = 30% (as of 5/22/20)

Flows for the week of 11/29/2020 to 12/6/2020 (units are in CFS)

Monday	88
Tuesday	79
Wednesday	77
Thursday	89
Friday	82
Saturday	87
Sunday	84

RAINFALL			
Lake Solano		Lake Berryessa	
11/14/2020	0.07	11/14/2020	0.09
11/18/2020	0.27	11/18/2020	0.51
11/19/2020	0.01	11/19/2020	0.06
Annual Rainfall Average	Year to Date Rainfall Total	Annual Rainfall Average	Year to Date Rainfall Total
23.77	0.35	25.44	0.66

GENERAL MANAGER'S NOTES

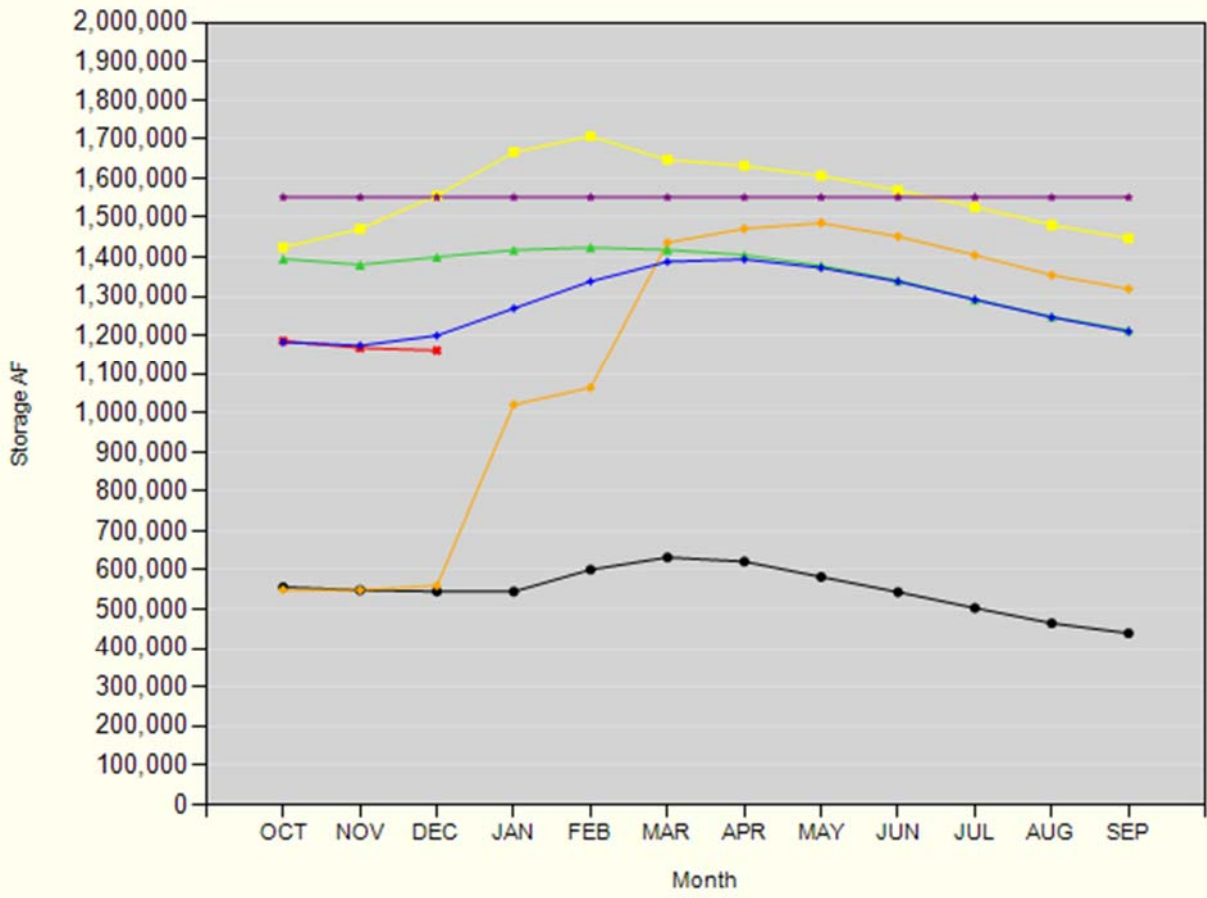
Advisory Commission meeting will be **TBD in December.**

The next SCWA Board Meeting will take place on **December 10, via Zoom.**

The next Flood Control Advisory Committee Meeting will be on **CANCELLED UNTIL FURTHER NOTICE at SCWA Office.**

Lake Berryessa Storage

1983 - Highest Storage 1995 - Greatest Gain 2021
1992 - Lowest Storage 2020 Average (1960 - Current) SPILL LEVEL



Lake Berryessa Water Temperature

