

SOLANO COUNTY WATER AGENCY
WEEKLY REPORT
For Week Ending Monday, October 11, 2021

Last Updated: Tuesday, October 12, 2021

SOLANO PROJECT

Lake Berryessa Surface Elevation	401.69 ft (top of Glory Hole is 439.96 ft)
Surface Elevation Changes from 10/1/2021	-0.5 ft
Lake Berryessa Storage (acre-feet)	900,557 AF (Max 1.55 Million AF)
Storage Changes from 10/1/2021	-8,695 AF
Lake Berryessa % Capacity	58.05%
Distance to Glory Hole	38.27 feet BELOW
Decrease from High Point	258,461 AF (Lake High of 1,159,018 on 02/05/2021)
Putah Creek Releases	26.00 cfs
Putah Creek Flood Releases	0.00 cfs

Lower Putah Creek minimum discharge requirements for the month of October:

20 cfs at the Diversion Dam.

5 cfs at Interstate 80.

NORTH BAY AQUEDUCT

Current Allocations of Contract Amount

SWP Allocation = 5% (as of 3/23/2021). No additional North of Delta Allocation. Term 91 in Effect (as of 4/29/2021).

Flows for the week of 10/4/2021 to 10/11/2021 (units are in CFS)

Tuesday	50
Wednesday	50
Thursday	58
Friday	66
Saturday	51
Sunday	53
Monday	

RAINFALL			
Lake Solano		Lake Berryessa	
Annual Rainfall Average	Year to Date Rainfall Total	Annual Rainfall Average	Year to Date Rainfall Total
23.28	0.00	24.71	0.00

GENERAL MANAGER'S NOTES

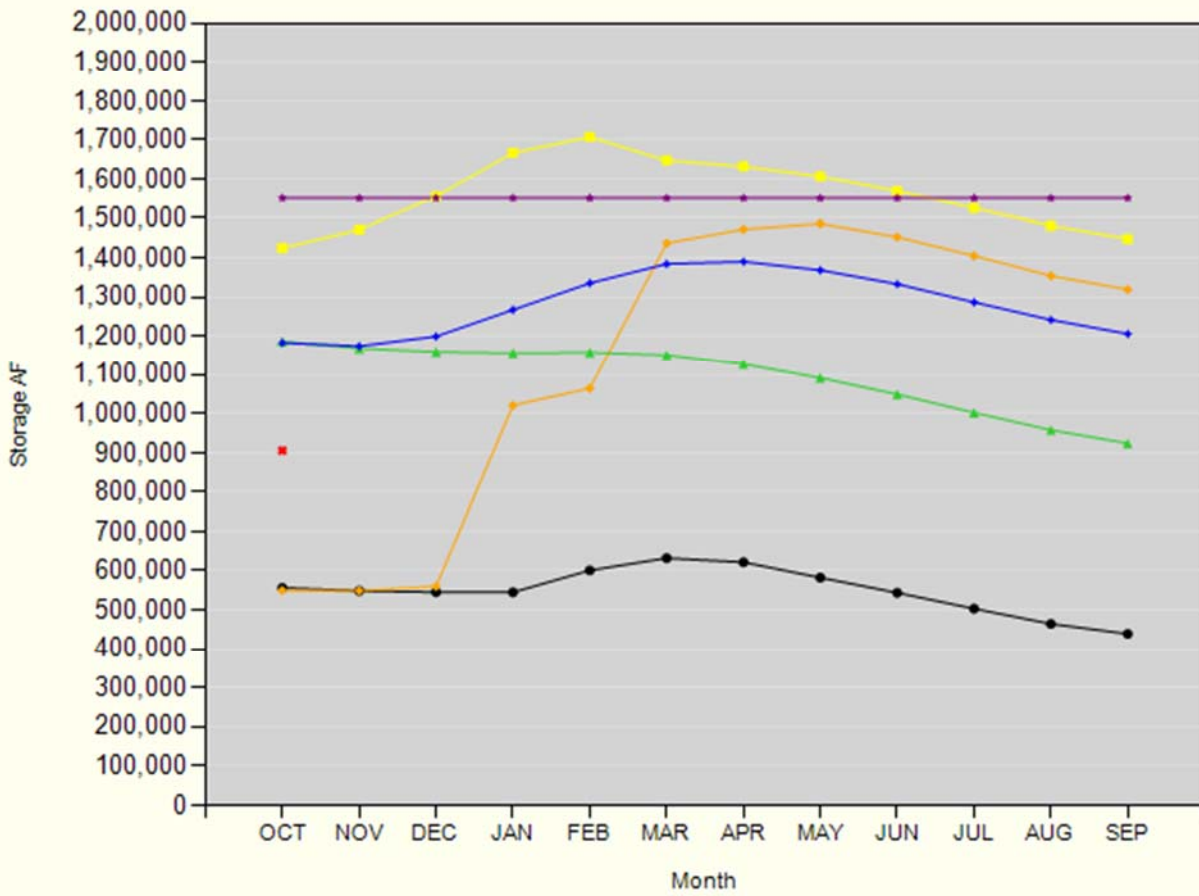
Advisory Commission meeting will be **October 27, 2021**.

The next SCWA Board Meeting will take place on **November 11, 2021, via Zoom**.

The next Flood Control Advisory Committee Meeting will be on **TBD, 2021 via Zoom**.

Lake Berryessa Storage

1983 - Highest Storage 1995 - Greatest Gain 2022
1992 - Lowest Storage 2021 Average (1960 - Current) SPILL LEVEL



Lake Berryessa Water Temperature

