

SOLANO COUNTY WATER AGENCY WEEKLY REPORT

For Week Ending Monday, October 2, 2023

Last Updated: Tuesday, October 3, 2023

SOLANO PROJECT

Lake Berryessa Surface Elevation	422.85 ft (top of Glory Hole is 439.96 ft)
Surface Elevation Changes from 10/1/2023	-0.02 ft
Lake Berryessa Storage (acre-feet)	1,241,675 AF (Max 1.55 Million AF)
Storage Changes from 10/1/2023	-1,136 AF
Lake Berryessa % Capacity	80.04%
Distance to Glory Hole	17.11 feet BELOW
Decrease from High Point	142,416 AF (Lake High of 1,384,091 on 05/10/2023)
Putah Creek Releases	21.00 cfs
Putah Creek Flood Releases	0.00 cfs

Lower Putah Creek minimum discharge requirements for the month of October:

20 cfs at the Diversion Dam.

5 cfs at Interstate 80

Pulse flow scheduled for 10/18 (50cfs at the Los Rios Check Dam)

NORTH BAY AQUEDUCT

Current Allocations of Contract Amount

SWP Allocation = 100%

Flows for the week of 9/25/2023 to 10/2/2023 (units are in CFS)

Tuesday	46
Wednesday	46
Thursday	61
Friday	67
Saturday	67
Sunday	74
Monday	

RAINFALL			
Lake Solano		Lake Berryessa	
10/01/2023	0.07	10/01/2023	0.21
Annual Rainfall Average	Year to Date Rainfall Total	Annual Rainfall Average	Year to Date Rainfall Total
22.51	0.07	23.85	0.21

GENERAL MANAGER'S NOTES

The next Advisory Commission meeting will take place on **October 25, 2023 at 12:30 pm.**

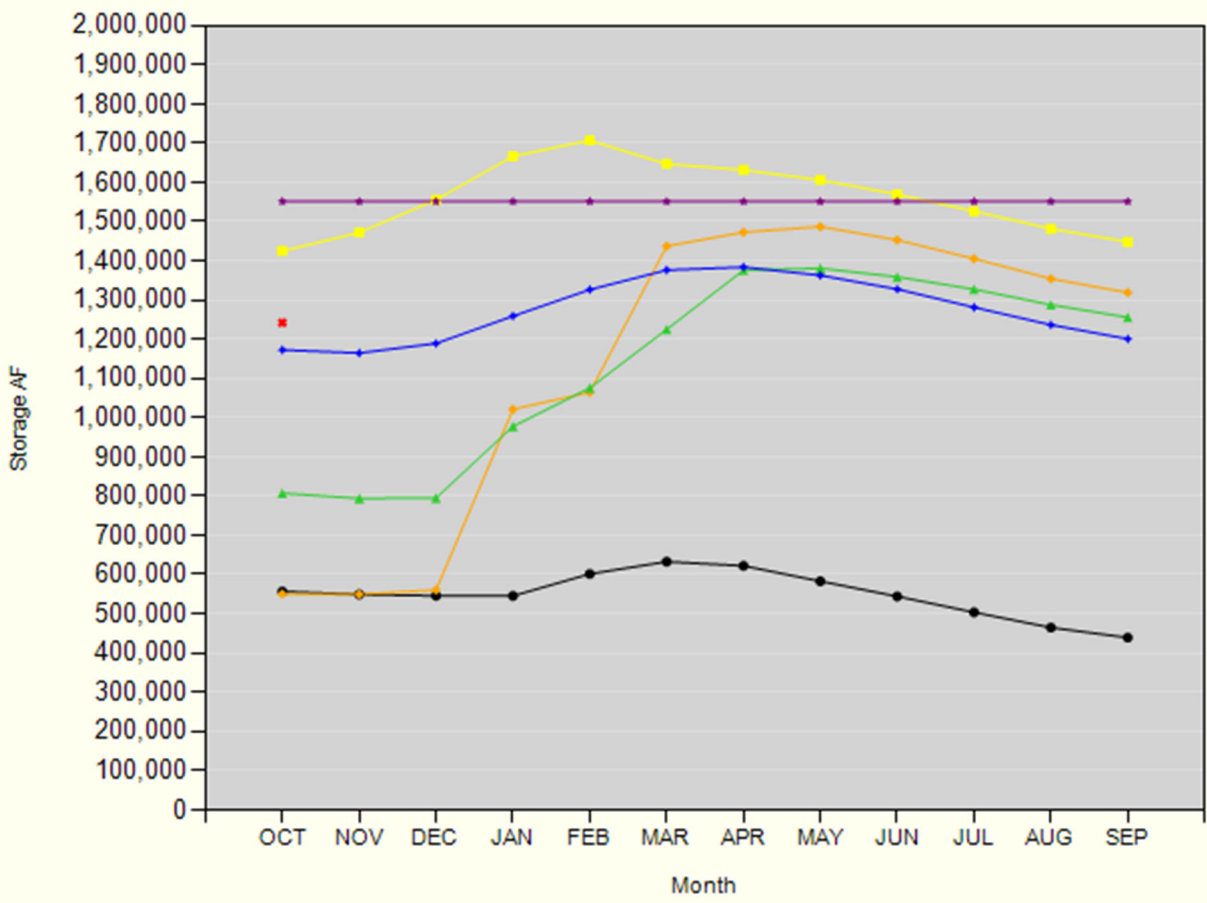
The next LPCCC Meeting will take place on **October 12, 2023 at 3:00 pm.**

The next Solano GSA Meeting will take place on **October 12, 2023 at 5:00 pm.**

The next SCWA Board Meeting will take place on **October 12, 2023 at 6:30 pm.**

Lake Berryessa Storage

1983 - Highest Storage 1995 - Greatest Gain 2024 SPILL LEVEL
1992 - Lowest Storage 2023 Average (1960 - Current)



Lake Berryessa Water Temperature

