

# Putah Creek Community Gathering – Davis

---

Public Workshop about the Putah Creek Water Management Initiative

# INTRODUCTION

# Tribal Acknowledgement

*We should take a moment to acknowledge the land on which we are gathered. For thousands of years, this land has been the home of Patwin people. Today, there are three federally recognized Patwin tribes: Cachil DeHe Band of Wintun Indians of the Colusa Indian Community, Kletsel Dehe Wintun Nation, and Yocha Dehe Wintun Nation.*

*The Patwin people have remained committed to the stewardship of this land over many centuries. It has been cherished and protected, as elders have instructed the young through generations. We are honored and grateful to be here today on their traditional lands.*

# Today's Agenda

- 6:30 - 6:40 Meeting Purpose & Agenda
- 6:40 - 7:00 Welcome & Introductions, by Andrew Fulks
- 7:00 - 7:15 Putah Creek History, by Scott Mittenberger
- 7:15 - 7:30 Putah Creek Water Trends, by Max Stevenson
- 7:30 - 7:40 What is the Putah Creek Water Management Initiative?, by Herb Wimmer
- 7:40 - 8:00 Gathering Input

# Ground Rules

- **Electronic Courtesy:** Silence cell phones
- **Be Comfortable:** Help yourself to refreshments and take a break if you need
- **Humor is Welcome:** But not at someone's expense
- **Stay focused on Meeting Purpose:** Lots of related issues, but focus on Putah Creek water management tonight
- **Use Common Courtesy:** No interruptions or judging others motives or actions
- **Treat each other with Respect:** Learn from other perspectives
- **All Ideas have Value**

# Meeting Outcomes

- Help everyone understand emerging Putah Creek water concerns
- Learn about past and present Creek water use and conditions
- Learn about Putah Creek Water Management (PCWM) Initiative
- Hear your creek water concerns and questions

# Who are we?



# 2000 Putah Creek Accord Established

- 1990's Creek Went Dry - Lawsuit
- Additional Base Flows
- Additional Salmon Flows
- LPCCC Committee
- Streamkeeper Position



# Lower Putah Creek Coordinating Committee

## LPCCC Mission

To protect, monitor, and enhance the resources of lower Putah Creek, within the framework of the Accord, while respecting property rights, **serving as a forum for dialogue about issues**, and promoting synergy among stakeholders in the Creek community.



# Who Serves on the LPCCC?

LPCCC Members		
	Name (Primary Rep)	Alternate
<b>Solano</b>		
<b>SCWA</b>	Chris Lee	John Vasquez
<b>SID</b>	JD Kluge	Cary Keaton
<b>Maine Prairie</b>		
<b>Vacaville</b>	Justen Cole	
<b>Fairfield</b>	Michael Hether	
<b>Vallejo</b>	Beth Schoenberger	Melissa Cansdale
<b>Suisun City</b>		Nora Flynn
<b>County of Solano</b>		
<b>Landowner</b>	Herb Wimmer	John Hasbrook
<b>Yolo</b>		
<b>PCC</b>	Turid Reid	Liz Reay
<b>City of Davis</b>	Patrick Huber	John McNerny
<b>UC Davis</b>	Andrew Fuls	JP Marie
<b>City of Winters</b>	Carol Scianna	Bill Biasi
<b>Landowner</b>		
<b>County of Yolo</b>	Tara Thronson	Lucas Frerichs
# of members		11
		10

The LPCCC represents the Boards of Supervisors of Solano and Yolo Counties; the Cities of Davis, Fairfield, Suisun, Vacaville, Vallejo and Davis; Solano County Water Agency; Solano Irrigation District; Maine Prairie Water District; the University of California, Davis; Putah Creek Council; and riparian landowners.

# Putah Creek Streamkeeper

**Max Stevenson, PhD**

- Solano County Water Agency (SCWA)
- Lower Putah Creek Coordinating Committee
- Protect Habitat and Resources for all Users



# Putah Creek Water Management Initiative

## Planning Subcommittee

- Andrew Fulks, Putah Creek Riparian Reserve Manager, UC Davis
- Chris Lee, General Manager, SCWA
- Herb Wimmer, Land owner
- Michael Hether, Assistant Director, Public Utilities, Fairfield
- Turid Reid, Board Member, Putah Creek Council

# MEETING PURPOSE

# Location: Putah Creek



**Figure 1-1**  
Project Location



A photograph of a creek with a white text box overlay. The creek flows through a landscape with dry, yellowish-brown grass and some green shrubs. The water is dark and reflects the surrounding vegetation. The text box is white with a thin black border and contains the text "Why are we focusing on water flows in Putah Creek?" in a bold, blue, sans-serif font.

**Why are we focusing on  
water flows in Putah  
Creek?**



The background of the slide features a faded image of a large steel truss bridge spanning a river, with lush greenery and purple lupine flowers in the foreground.

# **Huge Successes Since the 2000 Accord**

**Davis Putah Creek Nature Park**

**Thousands of Salmon Spawning**

**\$25 Million in Restoration Projects**

**A Community that Works Together**





# **Emerging Putah Creek Concerns**

**Uncertain Water Predictability**

**Fair Creek Use**

**Compliance with Regulations**

**Diminishing Water Quantity**

**Measurement Issues**

# Why You Are Here

- The Creek water is shared by many.
- The Solano County Water Agency has an obligation to provide water in the creek, including environmental flows.
- Farmers have a right to pump water for irrigation from the creek and a responsibility to measure and report their flows.
- The PCWM initiative is serving as the forum to coordinate these uses.

# **PUTAH CREEK HISTORY**

# Putah Creek Through Time

Thursday, October 5,  
2023





**Putah Creek - View from deck  
of Railroad Bridge looking  
downstream in 2022**

---

*Courtesy of Putah Creek  
Streamkeeper / Lower Putah  
Creek Coordinating Committee*



**Chief Hoo-yum-ha-yum and  
wife, Putah Creek, Lake  
County, October 1905**

---

*Courtesy of University of California at  
Berkeley, Bancroft Library, available at  
the Online Archive of California  
(<http://www.oac.cdlib.org/ark:/13030/tf6199p4bf/?order=1>)*





230  
map "X"

A hand-drawn map of the Rancho de las Puercas area. The map shows several land parcels, some labeled with names like "Rancho de las Puercas", "Rancho de las Puercas", "Rancho de las Puercas", and "Rancho de las Puercas". A river, labeled "Rio de las Puercas", flows through the area. A scale bar at the bottom indicates a distance of "Escala de Quince Leguas". A compass rose in the top left corner shows the cardinal directions: N (North), S (South), E (East), and W (West). The map is drawn on aged, yellowed paper.

Page 167

This is a historical plat map of Davisville, R. 2 E. The map shows a grid of land parcels, each labeled with the owner's name and the acreage. The parcels are numbered 1 through 17. The map includes a river, a cemetery, and a school building. The title 'DAVISVILLE' is prominently displayed in the center. The map is oriented with North at the top.

**Parcel Owners and Acreage:**

- Parcel 1: J. R. Cecil, 140.
- Parcel 2: John Hamler, 246.
- Parcel 3: J. E. Meert, 326.46.
- Parcel 4: G. W. Touzer, 326.57.
- Parcel 5: Burlin Cecil, 131.42.
- Parcel 6: Clancy & King, 160.
- Parcel 7: M. Clancy, 100.
- Parcel 8: N. Minor, 607.
- Parcel 9: Santa Rosa Savings Bank et al., 200.
- Parcel 10: Jno. Hunt, 180.
- Parcel 11: W. D. Childs, 260.45.
- Parcel 12: J. F. Childs, 304.52.
- Parcel 13: L. & J. R. Cecil, 160.
- Parcel 14: Oak Shade Fruit Co., 14.
- Parcel 15: Eli Stiden, 93.43.
- Parcel 16: M. V. Sparks, 617.11.
- Parcel 17: J. E. & C. L. Larue, 110.41.

**Other Landmarks:**

- Cemetery:** Located near Parcel 11.
- School:** Located near Parcel 10.
- Putah Creek:** Shown as a winding river at the bottom of the map.

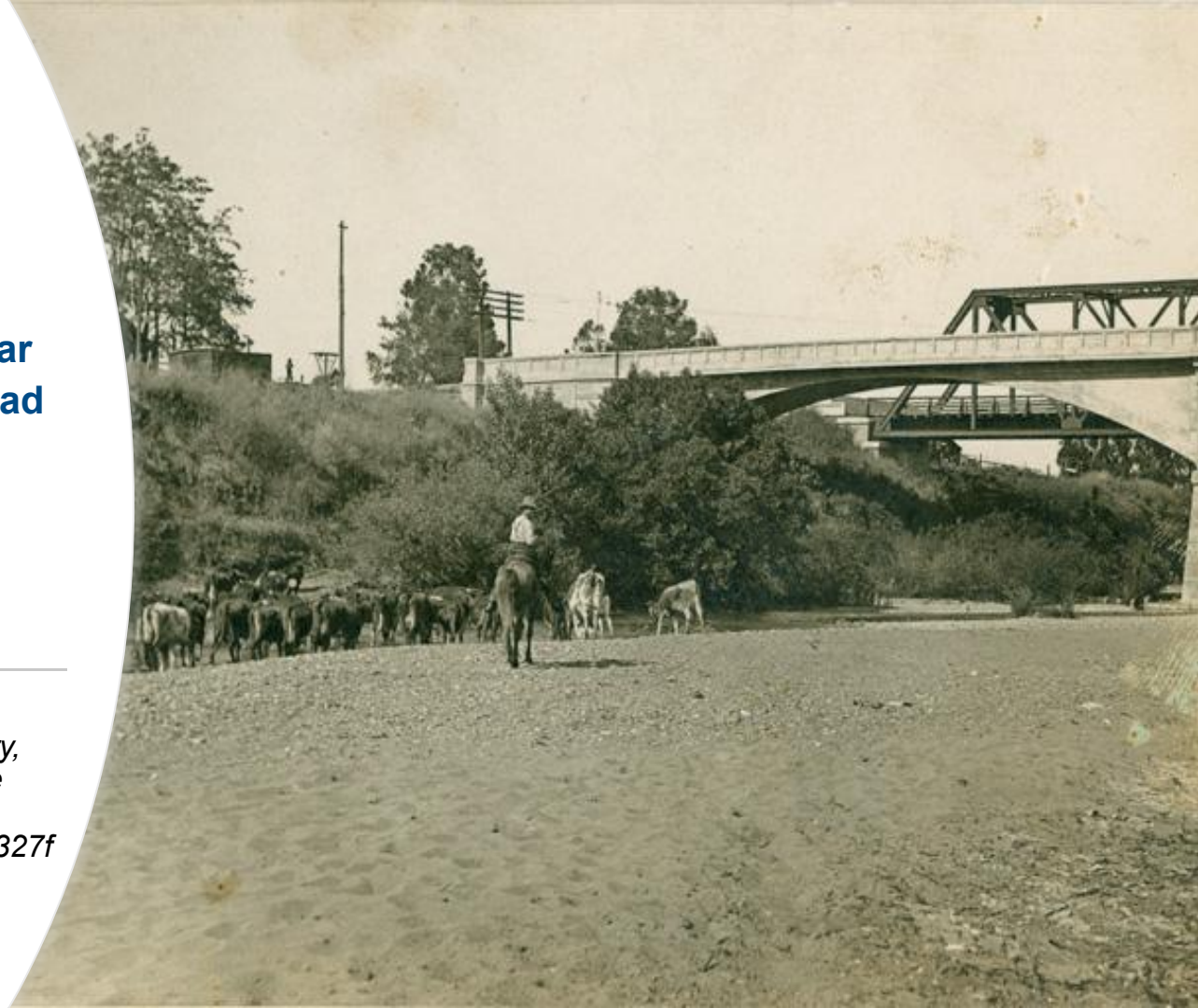
*Courtesy of Yolo County Records and Archives Center, available at David Rumsey Historical Map Collection (<https://www.davidrumsey.com/luna/servlet/s/it6019>)*



**Cattle herding in Davis near  
Putah Creek Bridge, Railroad  
Street, ca. 1908-1924**

---

*Courtesy of California State Library,  
California History Section Picture  
Catalog, available at Calisphere  
(<https://calisphere.org/item/23c25e6327f6c3ea27d8a0c6a11402a5/>)*



**U.S. Engineer Office, Sacramento,  
California, Location of Snagging  
and Clearing Work for Flood  
Control on Cache and Putah  
Creeks, to accompany  
subproject, dated August 22, 1939**

*Courtesy of National Archives at  
San Francisco, Records of the  
U.S. Army Corp of Engineers,  
Record Group RG 77*





## Putah Creek, Mrak Hall in the distance, ca. 1966

---

*Courtesy of University of California, Davis,  
Department of Special Collections, Stumpf (Paul  
K.) Slides of the University of California, Davis and  
Davis, California, available at Online Archive of  
California  
(<https://oac.cdlib.org/ark:/13030/c8dr2zr1/?brand=oac4>)*



## Monticello Dam and Lake Berryessa, undated photograph

---

*Courtesy of the U.S. Bureau of  
Reclamation, Central California Area  
Office, "Berryessa Facts" website  
(<https://www.usbr.gov/mp/ccao/berryessa/vsp/img/monticello-dam.jpg>)*





## **Creedence Clearwater Revival, *Green River*, 1969**

---

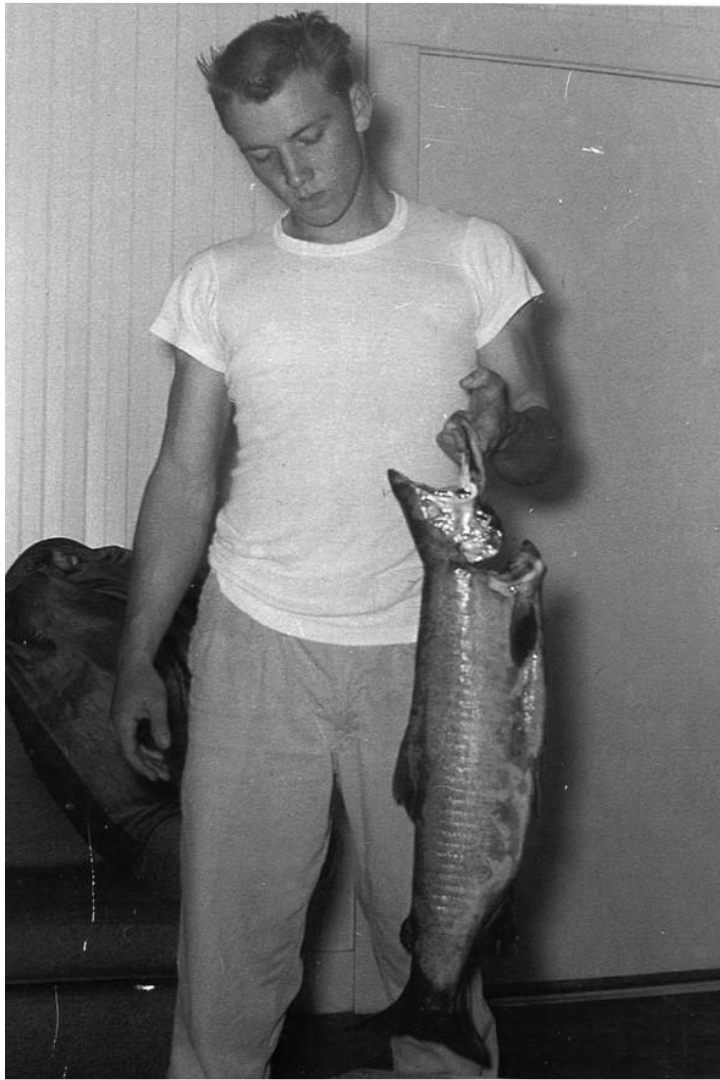
*Fair use, available on Wikipedia  
(<https://en.wikipedia.org/w/index.php?curid=1122448>)*



**Mack Cody, Winter  
1953, 12-lbs steelhead,  
Putah Creek**

---

*Courtesy of Putah Creek  
Streamkeeper / Lower Putah Creek  
Coordinating Committee*





**“Portions of Putah Creek  
parched,” *Davis  
Enterprise*, July 12, 1989**

Courtesy of Climate Confidential and The Davis  
Enterprise, “Putah Creek Legacy” website  
(<http://www.putahcreeklegacy.com/chapter-one-drought.html>)



Creek flows are down to a trickle or worse at the Putah Creek Reserve, southwest of Davis, where the Camp Putah summer program is held.  
Davis Enterprise 7/12/89 Photo by Todd Hammond

# Portions of Putah Creek parched



**April 2000 Memorandum  
transmitting the Putah Creek  
Cases settlement – the “Putah  
Creek Accord”**


---

*Courtesy of Climate Confidential and The  
Davis Enterprise, “Putah Creek Legacy”  
website  
([http://www.putahcreeklegacy.com/docu  
ments.html](http://www.putahcreeklegacy.com/documents.html))*

DE CUIR & SOMACH  
A Professional Corporation  
400 Capitol Mall, Suite 1900  
Sacramento, CA 95814  
Telephone: (916) 446-7979  
Facsimile: (916) 446-8199

**MEMORANDUM**

VIA FEDERAL EXPRESS

To: Alan B. Lilly  
Daniel J. O’Hanlon  
From: Stuart L. Somach   
Subject: Settlement – Putah Creek Cases  
Date: April 26, 2000

---

Enclosed is a final settlement package. Please note that the Settlement Agreement provides for its execution in counterparts, although it may be appropriate for the document to be executed in a “ceremony.” If we choose to execute by counterparts, I will date the agreement as of the date of the last signature. Also, the exact dollar numbers in the PCC Amended Judgment (Exhibit “B”) are not filled in, but shall not exceed the total amount agreed upon.

Please do not hesitate to contact me if you have any questions or need additional information.

SLS:sb

Encl.

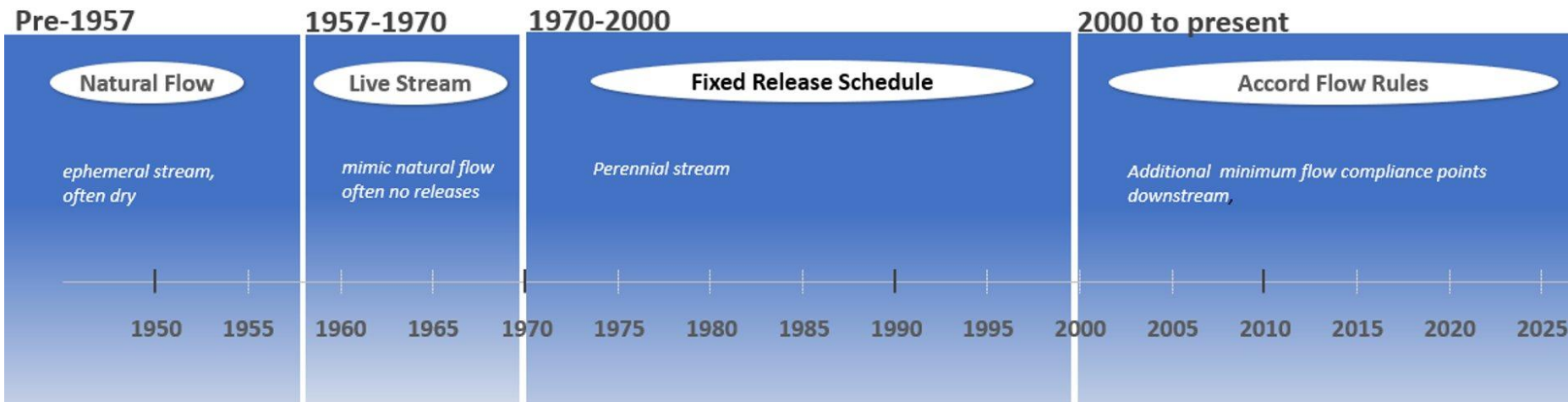
cc: Martha H. Lennihan (w/o Encl.)



# **PUTAH CREEK WATER TRENDS**

# Water Trends have Changed Over Time

## Historic to Present Summer *Releases*



<-----Went Dry at times----->      <-----Always has Water----->

# Historic Summer Flows

1955



SO-618-R2 Diversion Dam. Putah Creek downstream.  
View from Station 94+00 approximately 400 feet left  
of base line looking downstream along Putah Creek.  
Solano Project Region 2  
E. S. Ensor, Photo. February 15, 1955



SO-617-R2 Diversion Dam. Putah Creek Downstream.  
View from Station 77+50 approximately 10 feet left  
of base line looking downstream along Putah Creek.  
Solano Project Region 2  
E. S. Ensor, Photo. February 15, 1955



# Comparison from Railroad Bridge

**1955**



SO-619-R2 Diversion Dam. Putah Creek downstream.  
View from Station 99/25 approximately 260 feet left  
of base line looking downstream along Putah Creek.  
From Railroad Bridge deck.  
Solano Project  
E. S. Ensor, Photo.

Region 2  
February 15, 1955

**2022**



# 2000 Putah Creek Accord

## Flow Compliance Locations





# Adult Spawning Salmon

YEAR	2010	2011	2012	2013	2014	2015	2016	2017	2018	2019	2020	2021	2022
# of Adult Spawning Salmon				8	200-500	500-700	1500-1700	700	483+	48	52*	4	1000

# **WHAT IS THE PUTAH CREEK WATER MANAGEMENT INITIATIVE?**

# Putah Creek Water Management (PCWM) Initiative

## The Goals of PCWM



**Support  
Agriculture's Need  
for Water  
Information to Plan  
their Operations**



**Fair Creek  
Management**




**Comply with  
Water  
Regulations**



**Maintain  
Environmental  
Flows**

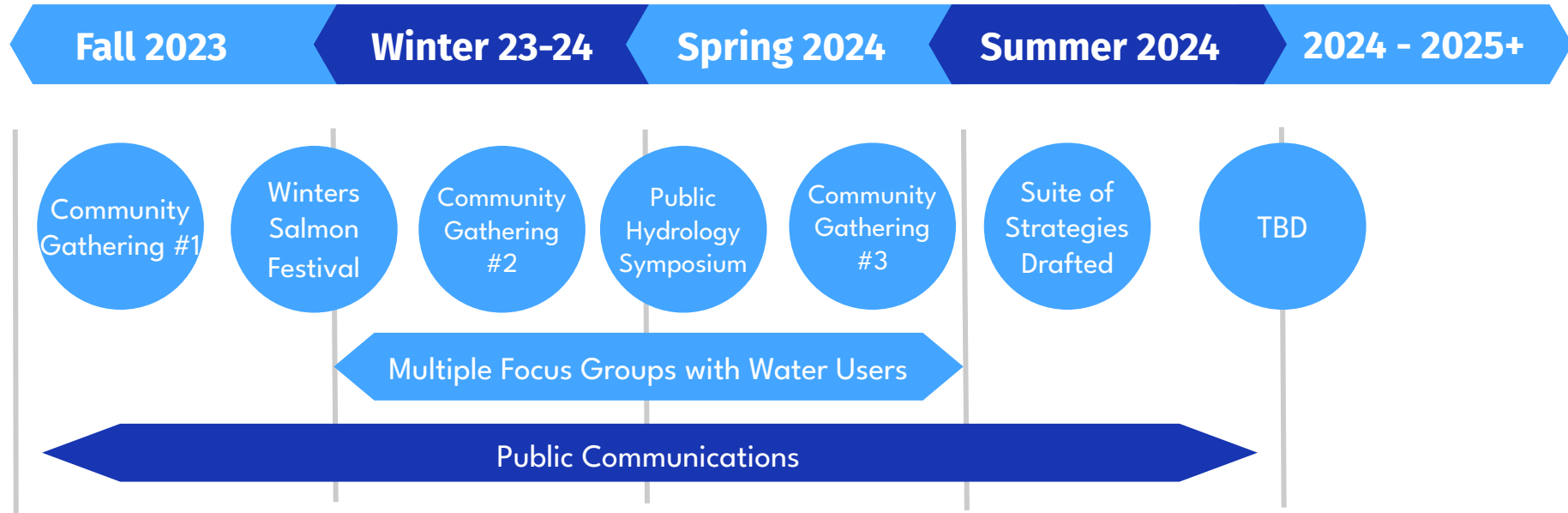


An aerial photograph showing a dense forest of trees with green and yellow foliage. A small stream flows through the center of the forest. The forest is bordered by agricultural fields on both sides, which appear to be plowed or planted. The lighting suggests it might be late afternoon or early morning, with long shadows and warm tones.

**PCWM's objective is to identify a suite of strategies to address Putah Creek challenges that are informed by:**

- **Stakeholder engagement**
- **Technical and scientific information**
- **Laws and regulations**

# PCWM Initiative Roadmap



**QUESTIONS?**

**Please fill out the Input Form**





# THANK YOU!

Max Stevenson at [mstevenson@scwa2.com](mailto:mstevenson@scwa2.com)

Juliana Birkhoff at [juliana@aginnovations.org](mailto:juliana@aginnovations.org)

Malia Josephine at [malia@aginnovations.org](mailto:malia@aginnovations.org)

Guadalupe Garcia [guadalupe@aginnovations.org](mailto:guadalupe@aginnovations.org)