

Putah Creek Pumper Meeting

Tuesday, February 13th, 9 - 11 AM

Lower Putah Creek Coordinating Committee

MEETING OVERVIEW

Today's Agenda

9:00-9:20 AM	Welcome & Meeting Overview	Juliana Birkhoff, Facilitator
9:20-9:35 AM	Introductions & PCWM Context	Max Stevenson, Streamkeeper, LPCCC Malia Josephine, Facilitator
9:35-9:50 AM	Putah Creek Water Trends	Max Stevenson, Streamkeeper, LPCCC
9:50-10:45 AM	Gathering Input	Participants
10:45-11:00 AM	Next Steps	Juliana Birkhoff, Facilitator

Meeting Purpose

- Shared understanding of Putah Creek challenges
- LPCCC & SCWA roles and responsibilities
- Identify farmers' creek water management issues
- Agree how to increase information
- Identify possible solutions to explore

Ground Rules

- **Electronic Courtesy:** Silence cell phones
- **Be Comfortable:** Help yourself to refreshments and take a break if you need
- **Humor is Welcome:** But not at someone's expense
- **Stay focused on Meeting Purpose:** Lots of related issues, but focus on Putah Creek water management tonight
- **Use Common Courtesy:** No interruptions or judging others motives or actions
- **Treat each other with Respect:** Learn from other perspectives
- **All Ideas have Value**

Who are we?



INTRODUCTIONS

Yolo County
Bd. Of Supervisors

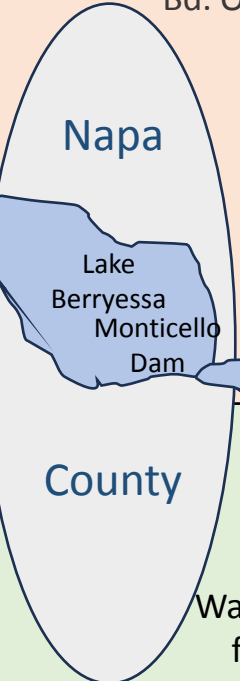
CA Dept. of Fish & Wildlife

U.S. Bureau of Reclamation

CA Dept. of Water Resources

A Very Complex Puzzle

Putah Creek Accord 2000



Yolo Flood Control District

WINTERS

DAVIS

UCDAVIS

Diversion Dam

~15% of Releases

LPCCC

106 A Barrie

Check Dam

Lake Solano

Lower Putah Creek

Riparian Landowners

Riparian Diversifiers

Ag Diversions & Conveyance

SCWA

Putah South Canal

Water Wholesaler for Cities and Industry
Water Conservation
Flood Control

SID
Retailer of Water for Growers and Ranchers
Dam Operations

DIXON

Ag Owners &. Operators

Non- Riparian Irrigated Lands

Putah Creek Trout

Putah Creek Council

Solano County
Bd. Of Supervisors

~85% of Releases

12/17/23 HFW

SACRAMENTO

Toe Drain

River

2000 Putah Creek Accord Established

- 1990's Creek Went Dry - Lawsuit
- Additional Base Flows
- Additional Salmon Flows
- LPCCC Committee
- Streamkeeper Position

Who Serves on the LPCCC?

2023 LPCCC Roster Adopted January 12, 2023		
	5 Members Each County	Alternates
Solano		
SCWA	Chris Lee	John Vasquez
SID	JD Kluge	Cary Keaton
Maine Prairie		
Vacaville	Justen Cole	
Fairfield	Michael Hether	
Vallejo		
Suisun City		Nora Flynn
County of Solano		
Landowner	Herb Wimmer	John Hasbrook
Yolo		
PCC	Turid Reid	Liz Reay
City of Davis	Patrick Huber	John McNerny
UC Davis	Andrew Fulks	JP Marie
City of Winters	Carol Scianna	Bill Biasi
Landowner		
County of Yolo	Tara Thronson	Lucas Frerichs
<i># of members</i>	<i>10</i>	<i>9</i>

The LPCCC represents the Boards of Supervisors of Solano and Yolo Counties; the Cities of Davis, Fairfield, Suisun, Vacaville, Vallejo and Davis; Solano County Water Agency; Solano Irrigation District; Maine Prairie Water District; the University of California, Davis; Putah Creek Council; and riparian landowners.

WHY ARE YOU HERE?

Location: Putah Creek

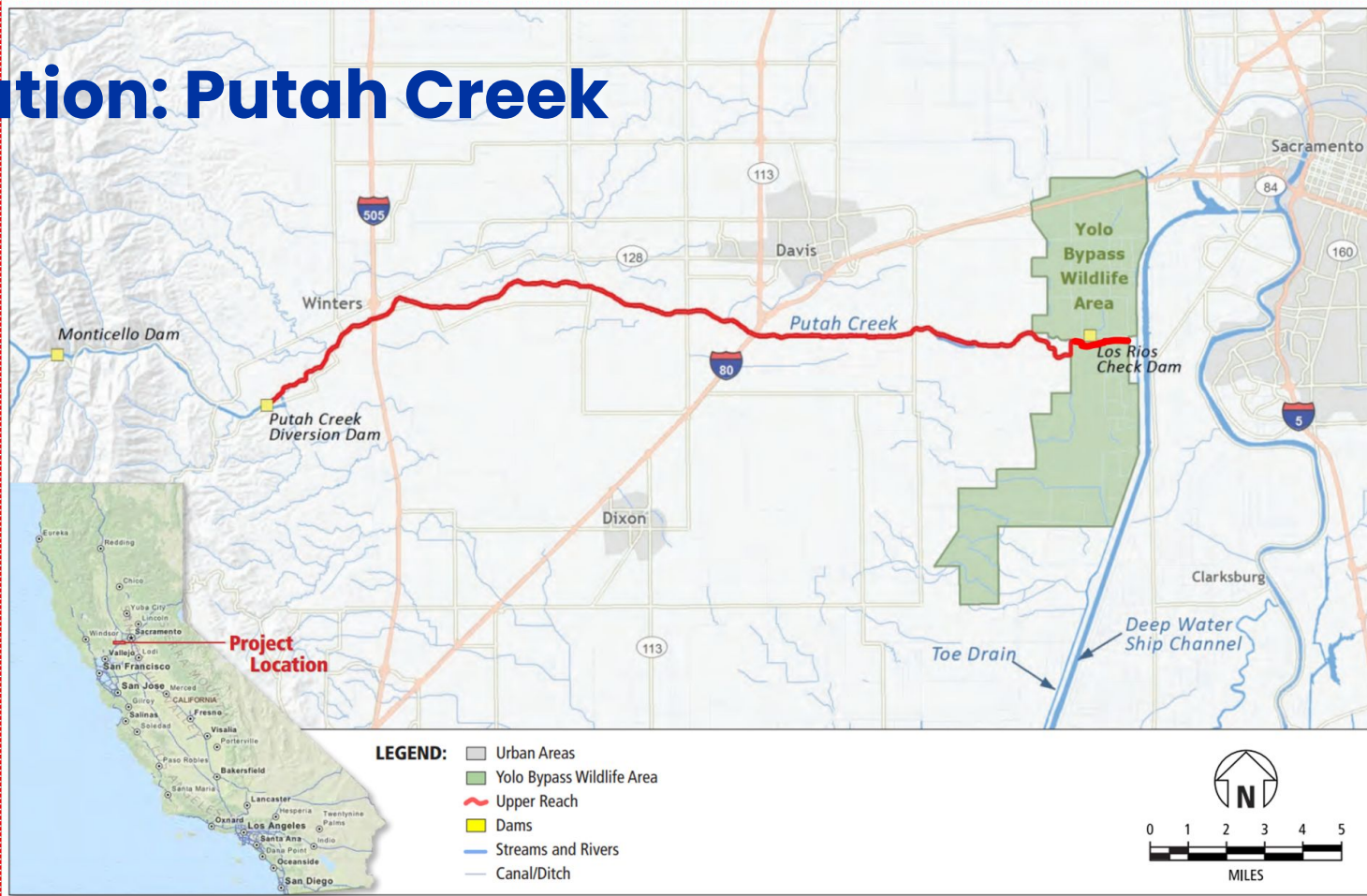


Figure 1-1
Project Location



**Emerging
Putah Creek
Concerns**

Uncertain Water Predictability

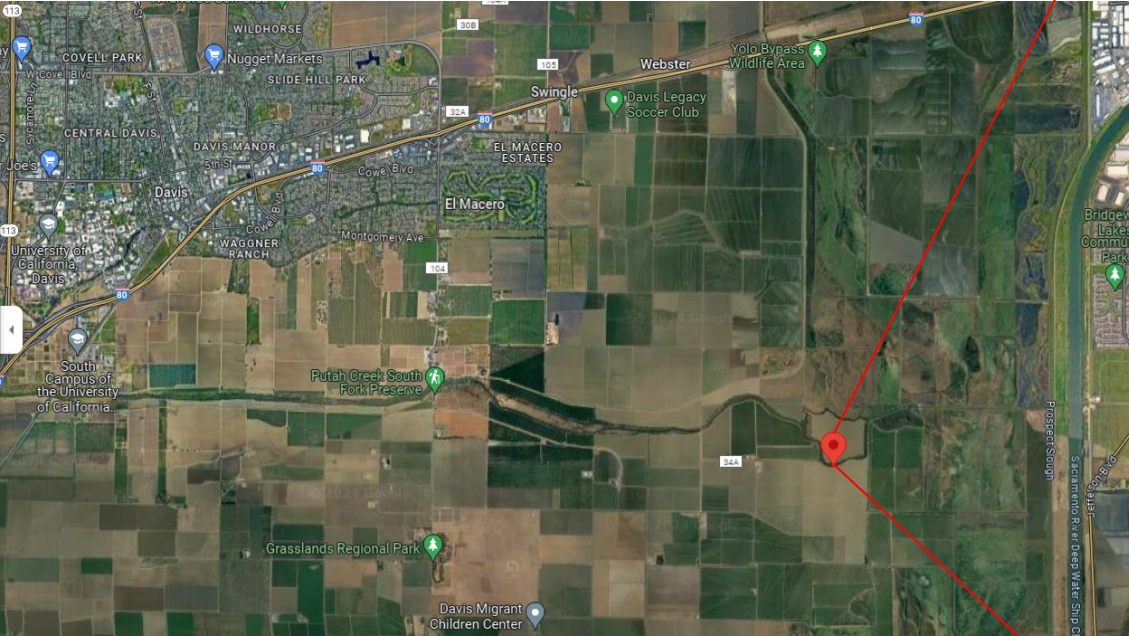
Fair Creek Use

Compliance with Regulations

Diminishing Water Quantity

Measurement Issues

November, 2023 (mid-salmon run)



Why You are Here


The Creek water is shared by many.

The Solano County Water Agency has an obligation to provide water in the creek, including environmental flows.

Riparian farmers have a right to pump water for irrigation from the creek and a responsibility to measure and report their flows.

The PCWM initiative is serving as the forum to coordinate these uses.

PCWM CONTEXT

An aerial photograph showing a lush green forest with a small stream flowing through it. The forest is bordered by agricultural fields, some of which are plowed and appear brown. The scene is captured from a high angle, looking down on the landscape.

PCWM's objective is to identify a suite of strategies to address Putah Creek challenges that are informed by:

- **Stakeholder engagement**
- **Technical and scientific information**
- **Laws and regulations**

Putah Creek Water Management (PCWM) Initiative

The Goals of PCWM



**Support
Agriculture's Need
for Water
Information to Plan
their Operations**



**Fair Creek
Management**

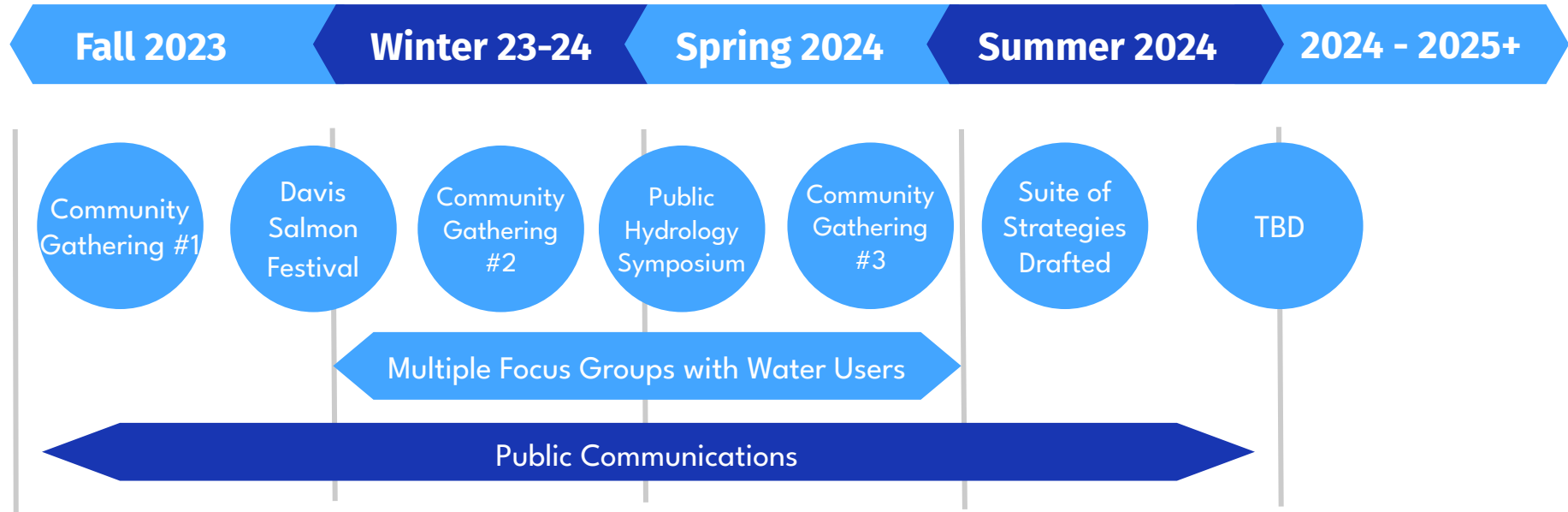


**Comply with
Water
Regulations**



**Maintain
Environmental
Flows**

PCWM Initiative Roadmap



PUTAH CREEK WATER TRENDS

Yolo County
Bd. Of Supervisors

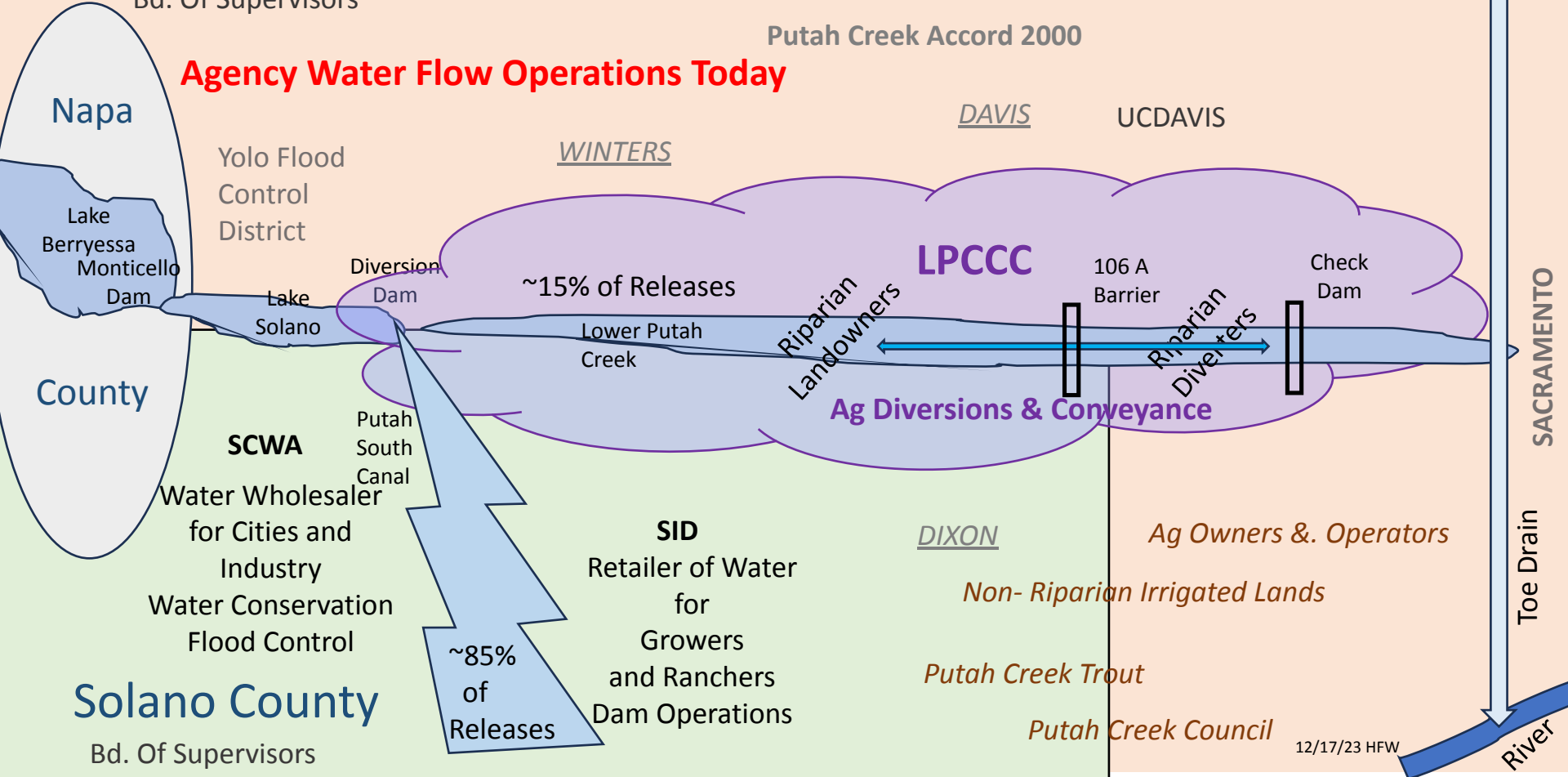
CA Dept. of Fish & Wildlife

U.S. Bureau of Reclamation

CA Dept. of Water Resources

Putah Creek Accord 2000

Agency Water Flow Operations Today



Napa

County

Yolo Flood Control District

Lake Berryessa
Monticello Dam

Lake Solano

Diversion Dam

WINTERS

~15% of Releases

Lower Putah Creek

Riparian Landowners

LPCCC

DAVIS

UCDAVIS

106 A Barrier

Riparian Diversifiers

Check Dam

Ag Diversions & Conveyance

SCWA

Water Wholesaler for Cities and Industry
Water Conservation
Flood Control

Putah South Canal

SID

Retailer of Water for Growers and Ranchers
Dam Operations

DIXON

Ag Owners &. Operators

Non- Riparian Irrigated Lands

Putah Creek Trout

Putah Creek Council

Solano County

Bd. Of Supervisors

~85% of Releases

12/17/23 HFW

SACRAMENTO

Toe Drain

River

2000 Putah Creek Accord Flow Compliance Locations



Daily Required Flows at the Compliance Points



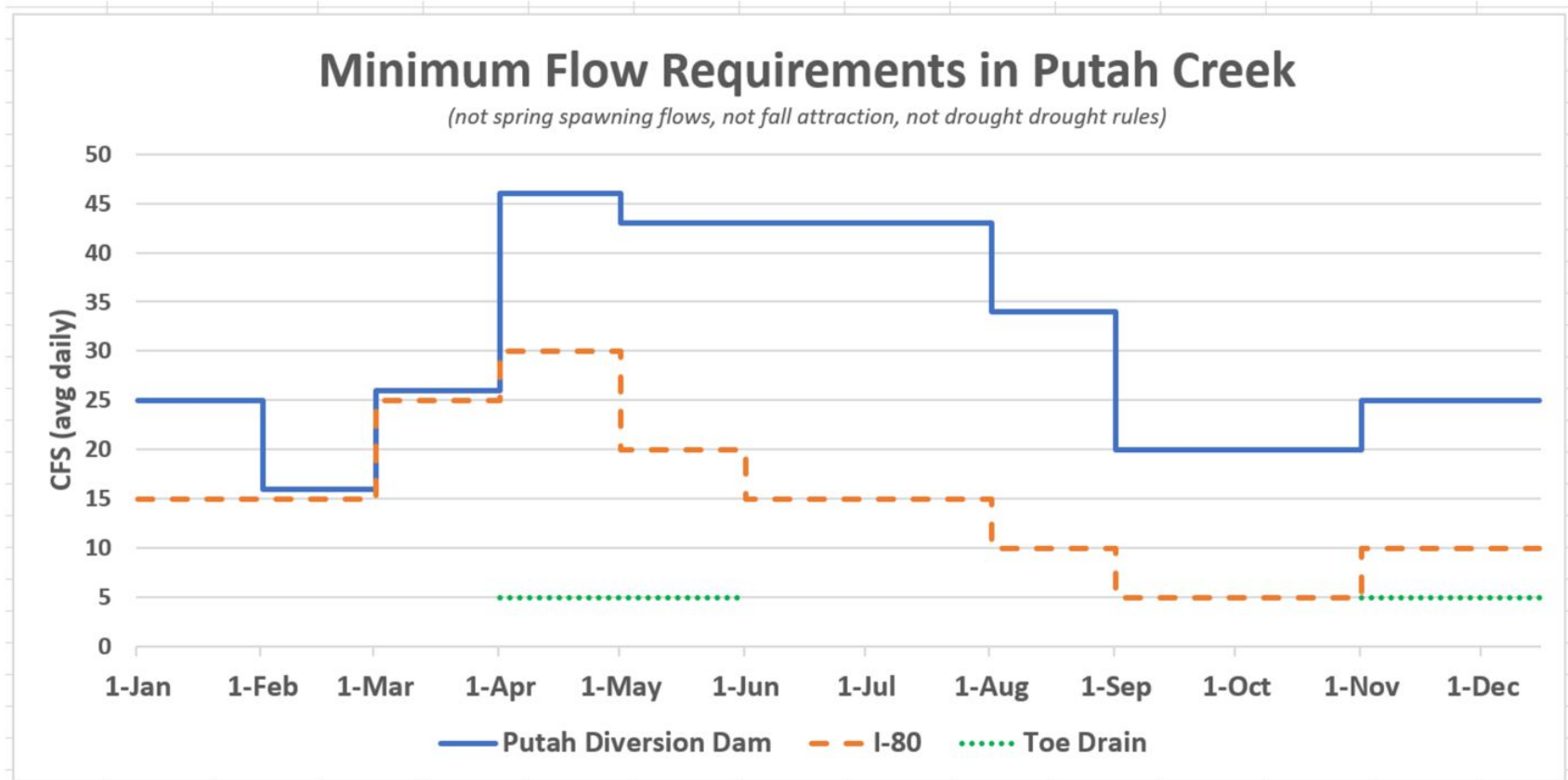
Daily Required Flows	
Month	Average Flow (cfs)
October	20
November	25
December	25
January	25
February	16
March	26
April	46
May	43
June	43
July	43
August	34
September	20

Daily Required Flows	
Month	Average Flow (cfs)
October	5
November	10
December	10
January	15
February	15
March	25
April	30
May	20
June	15
July	15
August	10
September	5

Daily Required Flows	
Month	Average Flow (cfs)
October	> 0 *
November	5
December	5
January	> 0 *
February	> 0 *
March	> 0 *
April	5
May	5
June	> 0 *
July	> 0 *
August	> 0 *
September	> 0 *

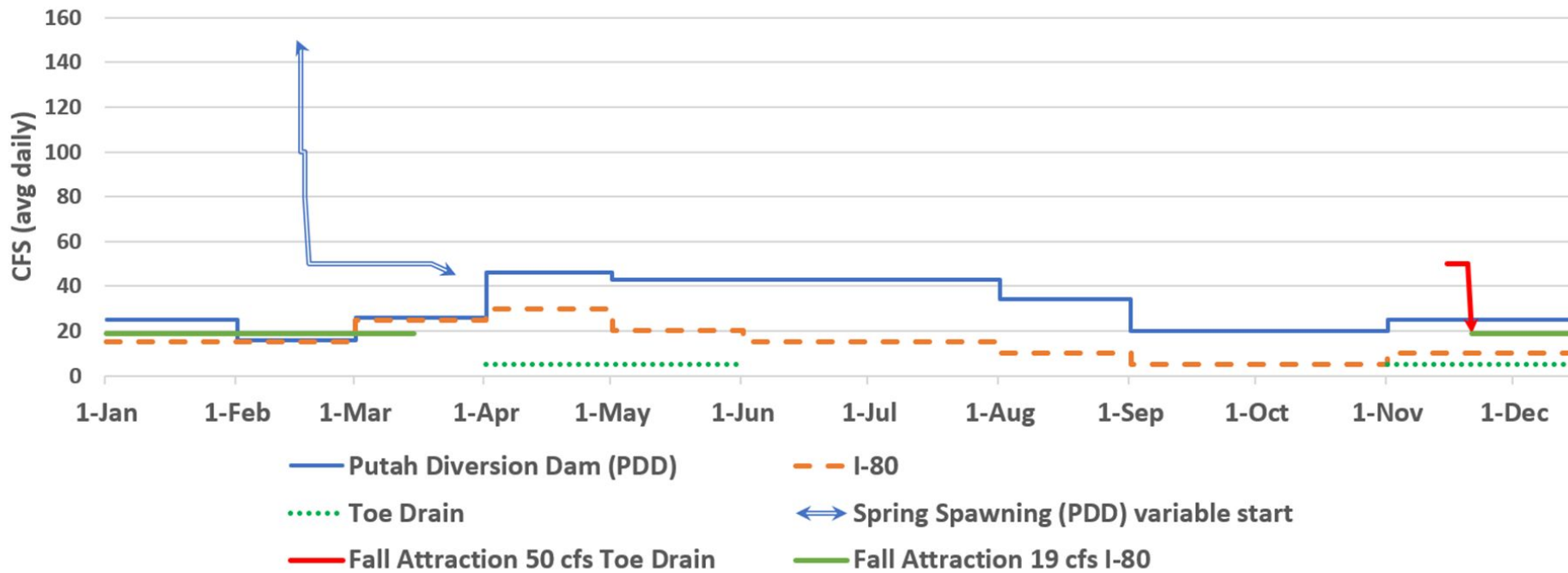
*Continuous Flow

Accord Exhibit A - Solano Project Releases and Instream Flows for Lower Putah Creek



Flow Requirements in Putah Creek

Base flows plus fall and spring pulse flows



Flow Compliance Point in Putah Creek near the Toe Drain

May 8, 2022



May 25, 2023



Flow Compliance Points in Putah Creek near the Toe Drain

- 5/11/2023 no flow over the Boards at Los Rios Check Dam (LRCD) (Hyer)
- 5/15/2023 low flow over boards, estimate maybe 3-5 cfs (Stevenson)
- 5/16/2023 no flow over the boards at LRCD (Cuetara)
- 5/19/2023 low flow over boards, estimate maybe 3-5 cfs (Stevenson)
- 5/31/2023 low flow over boards, estimate maybe 3-5 cfs (Stevenson)

Putah Creek Conveyance & Wheeling Information

180 - MACE

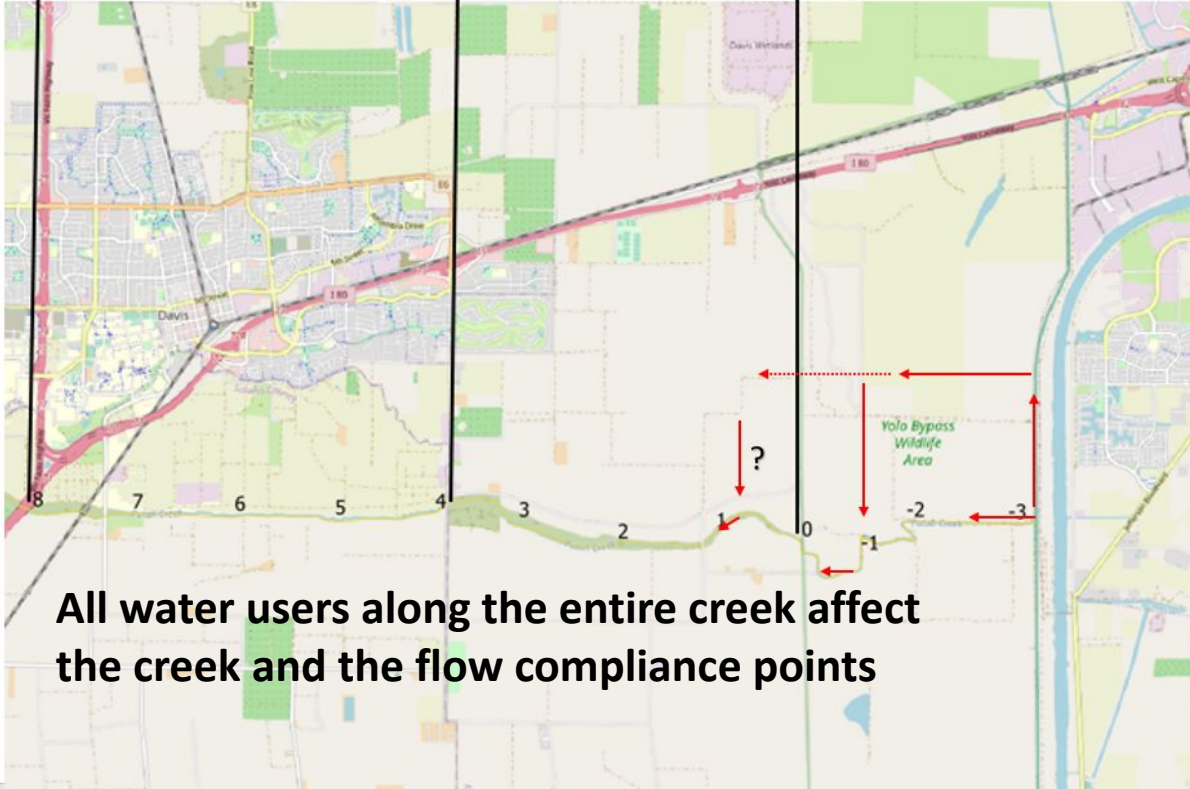
4 miles
I-80 to Mace Blvd.

MACE – RM0

4 miles
Mace Blvd. to River Mile 0

RM0 - TOE

3.26 miles
River Mile 0 to Toe Drain



All water users along the entire creek affect the creek and the flow compliance points

Flow direction In Summer

Putah Creek is used for Conveyance and Wheeling

Putah Creek Management Information Gaps

- The Creek is a shared resource that needs to be more effectively managed (water balance). This can only happen with accurate up-to-date flow information (inflows and outflows).
 - We understand ag operations use groundwater, purchased water, etc.
 - Understand that ag operations use Putah Creek to convey water from location to location
- SCWA cannot fulfill its environmental flow requirements and regulatory responsibilities without Pumpers measuring and reporting water inflows and outflows.
- SCWA could measure in more places in the creek, but two challenges:
 - Need agreement to gather flow information
 - Access to places to conduct measurements

GATHERING INPUT

Questions for Pumpers

- When do you need water for your operations?
 - Does the timing of this water requirement change from year to year? Crop rotation? Rainfall? Summer temperatures?
 - How do you estimate the amount of water that you need?
- Do you have concerns about having more water measurements?
 - Do you currently measure your flow (in and outflow)?
 - Are there any barriers you face with measuring your flows? Or implementing flow meters?
- Anything SCWA or LPCCC should know about your agricultural operations that would help us share water more effectively for your concern?
- Do you have any ideas to improve fish habitat?

Ideas for Strategies So Far...

- Communication & Coordination mechanisms
- Infrastructure fixes
- Sourcing other water supplies
- Improving and sharing measurements
- Accounting for transitions in Landownership & Lessee's
- Fish passage improvements
- Applying for Money / Grants



THANK YOU!

Max Stevenson at mstevenson@scwa2.com

Juliana Birkhoff at juliana@aginnovations.org

Malia Josephine at malia@aginnovations.org

Guadalupe Garcia guadalupe@aginnovations.org